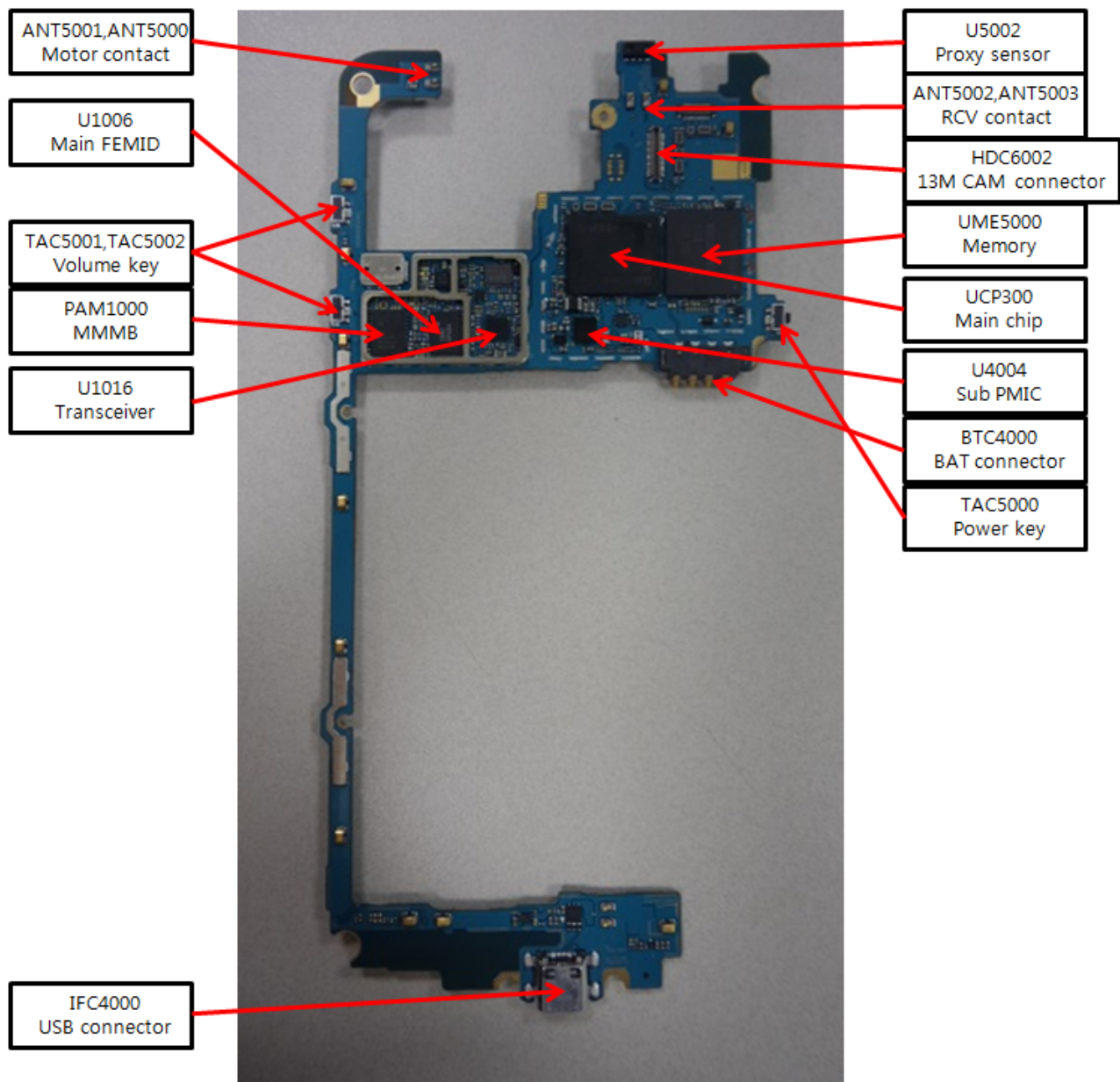


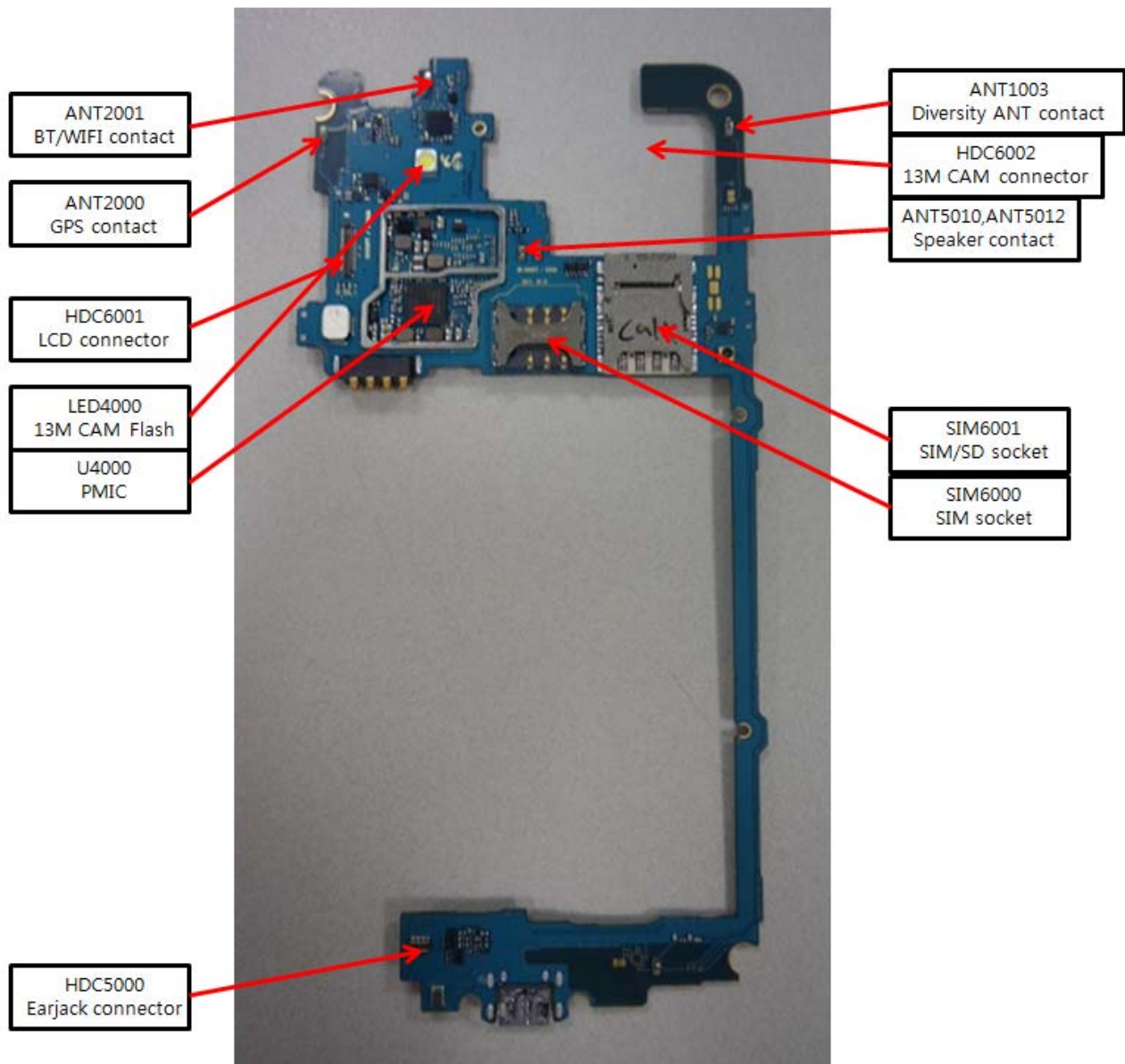
---

## 8. Level 3 Repair (VIETMOBILE.VN)

---

### 8-1. Components Layout

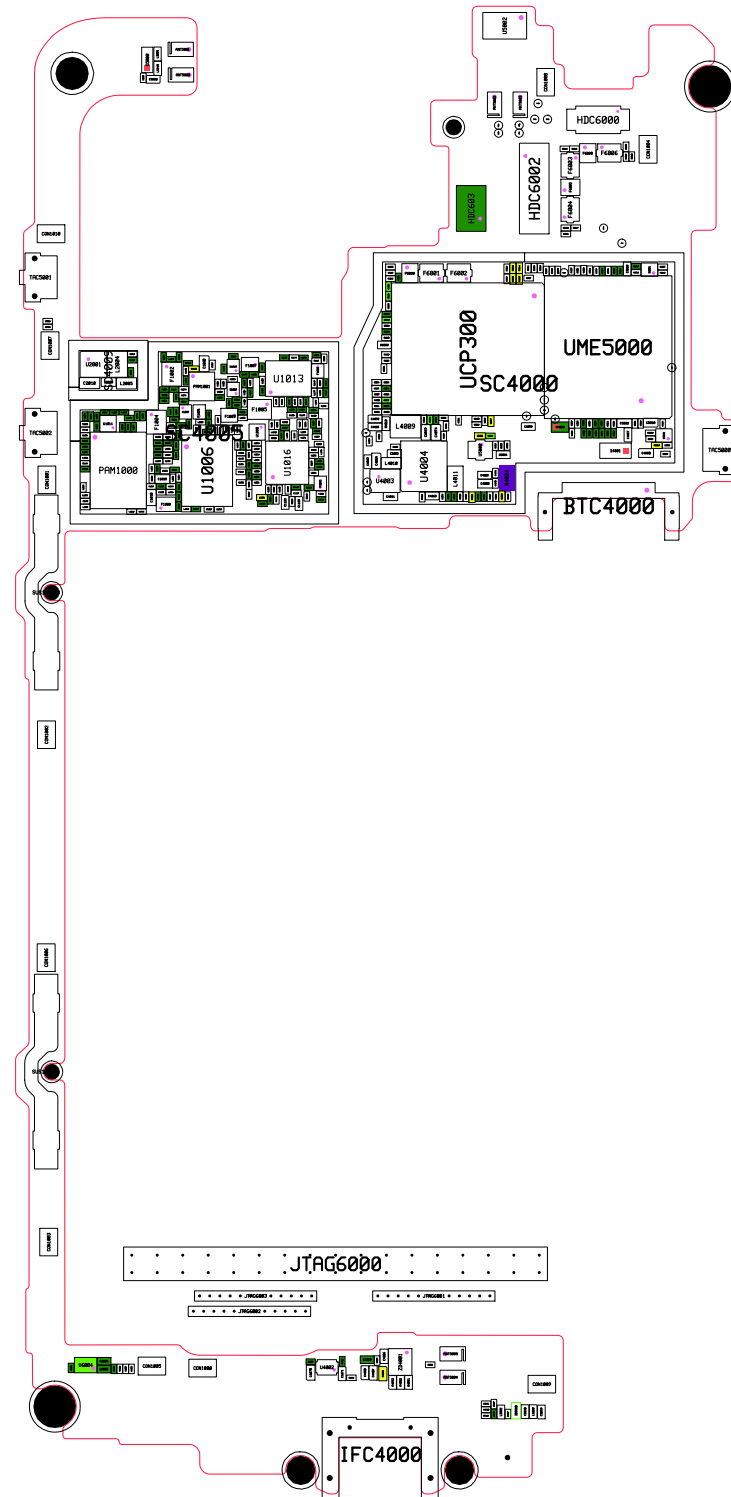




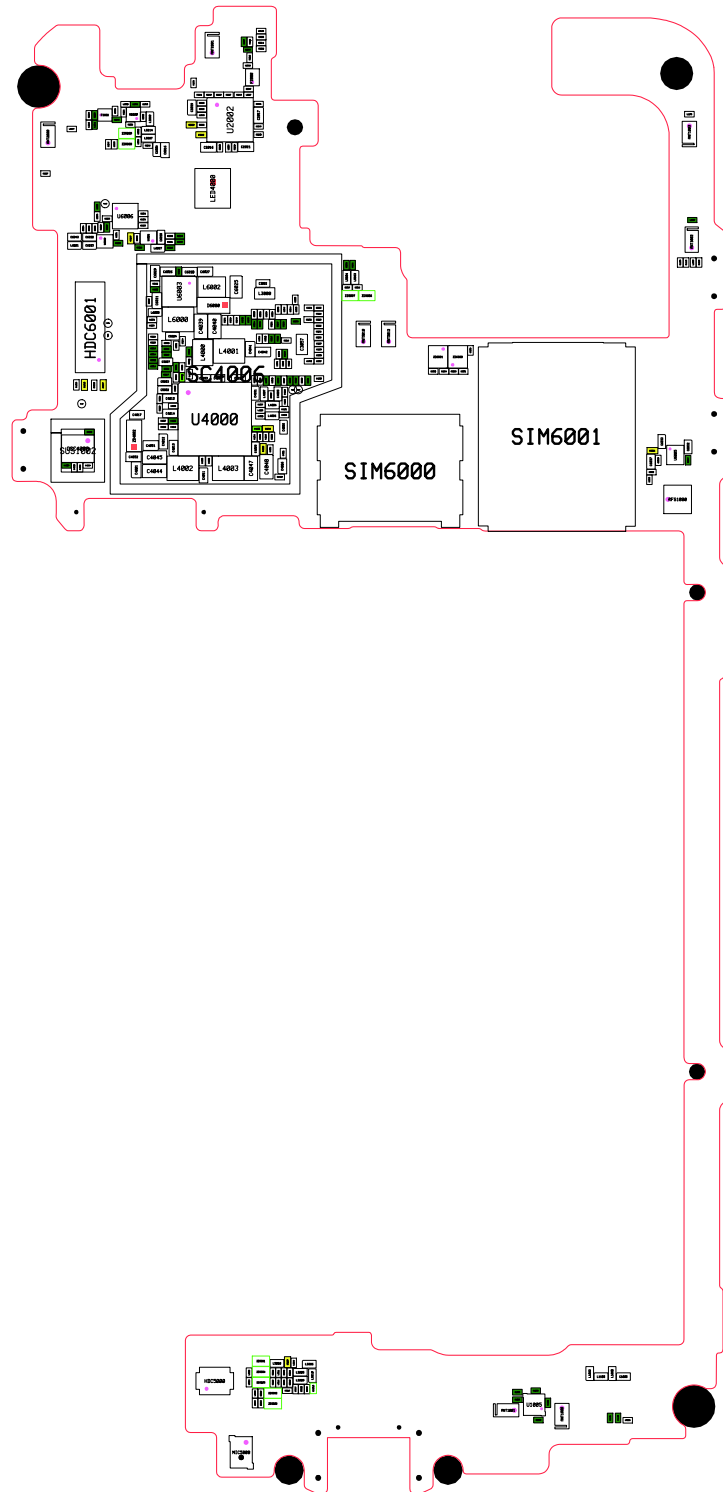


### 8-3. PCB Diagrams

8-3-1. Top

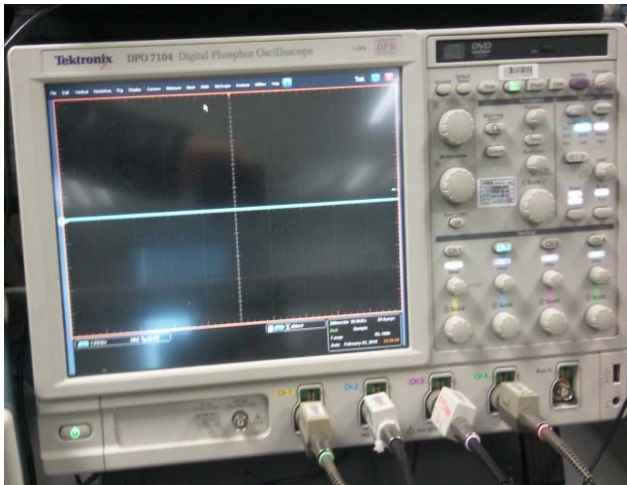


### 8-3-2. Bottom



## 8-4. Flow Chart of Troubleshooting

### Equipments



↑ Oscilloscope



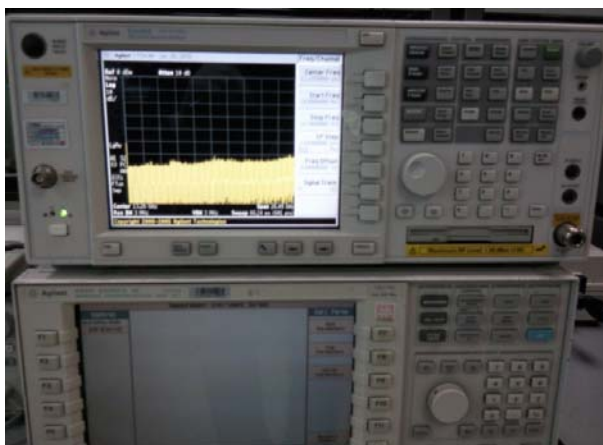
↑ Digital Multimeter



↑ Power Supply



↑ + driver, ESD Safe Tweezer

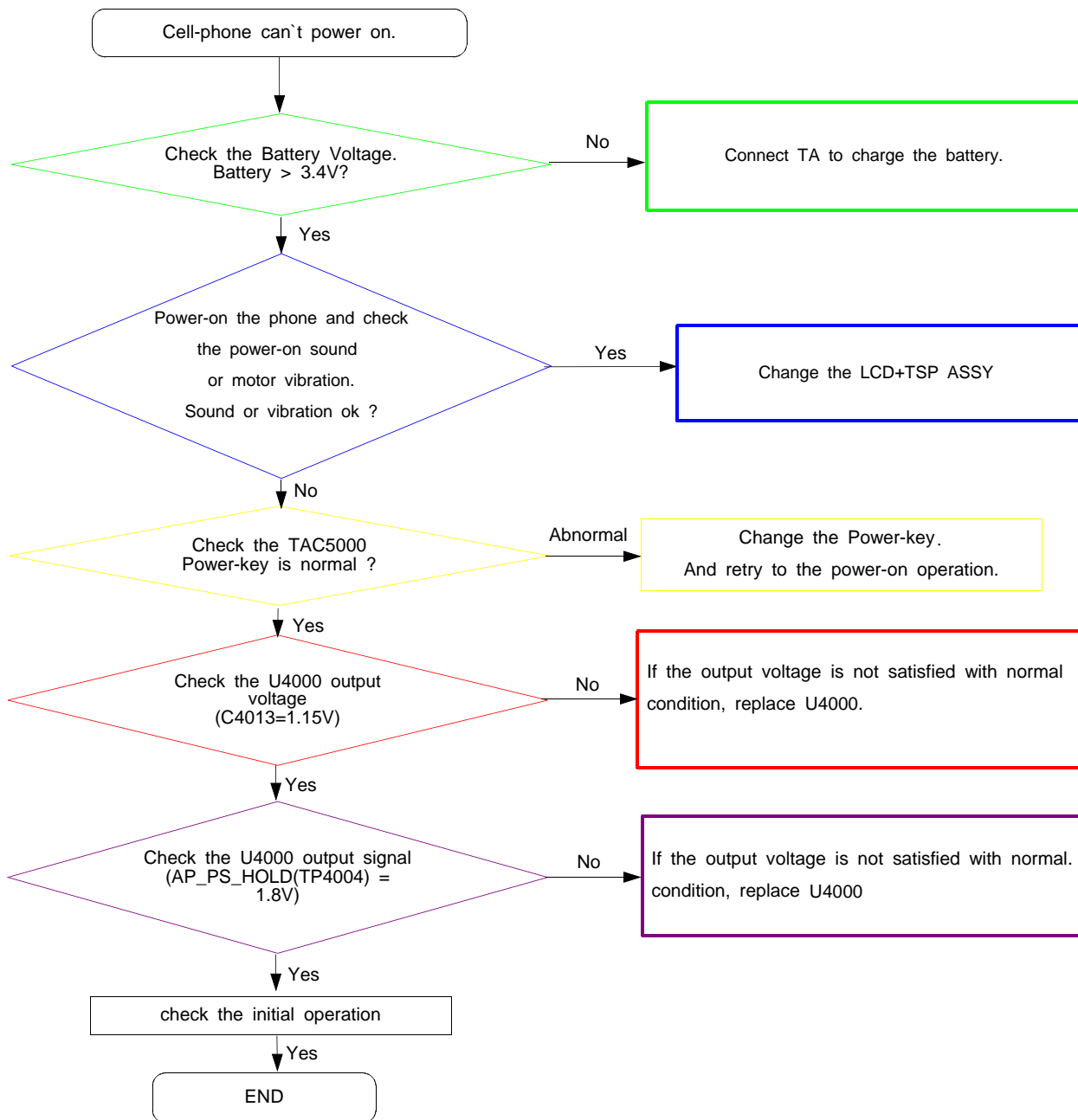


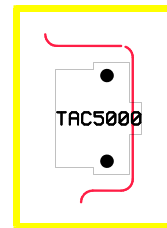
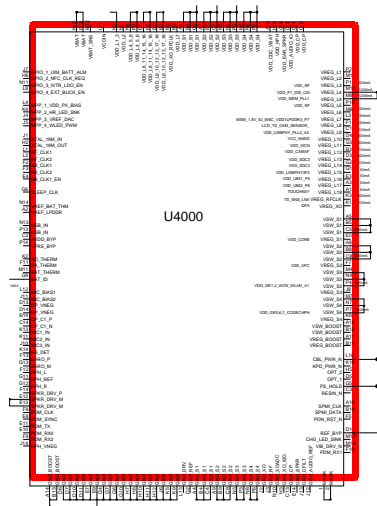
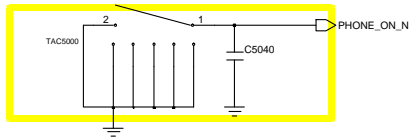
↑ 8960 & Spectrum Analyzer



↑ Soldering iron

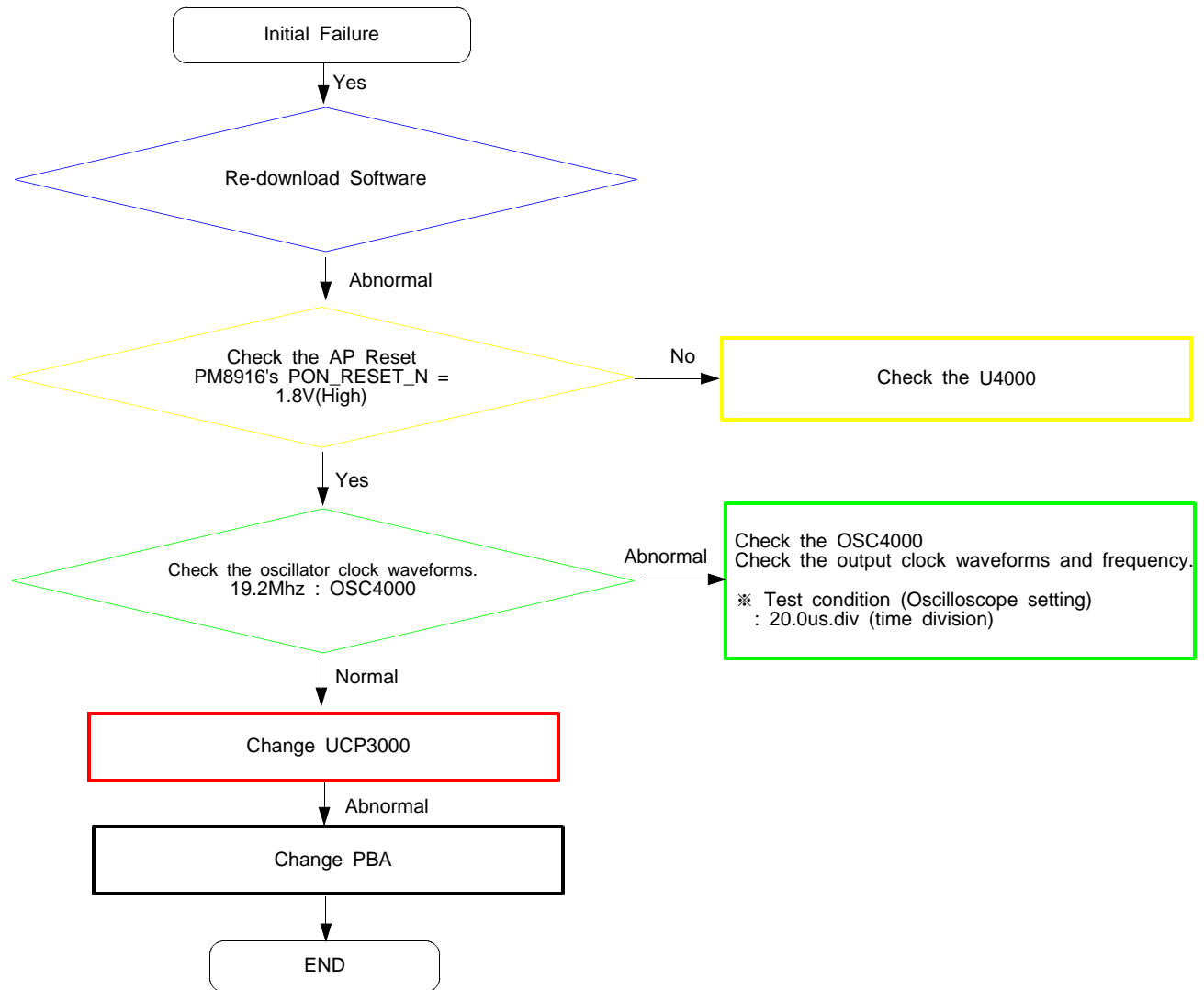
### 8-4-1. Power On

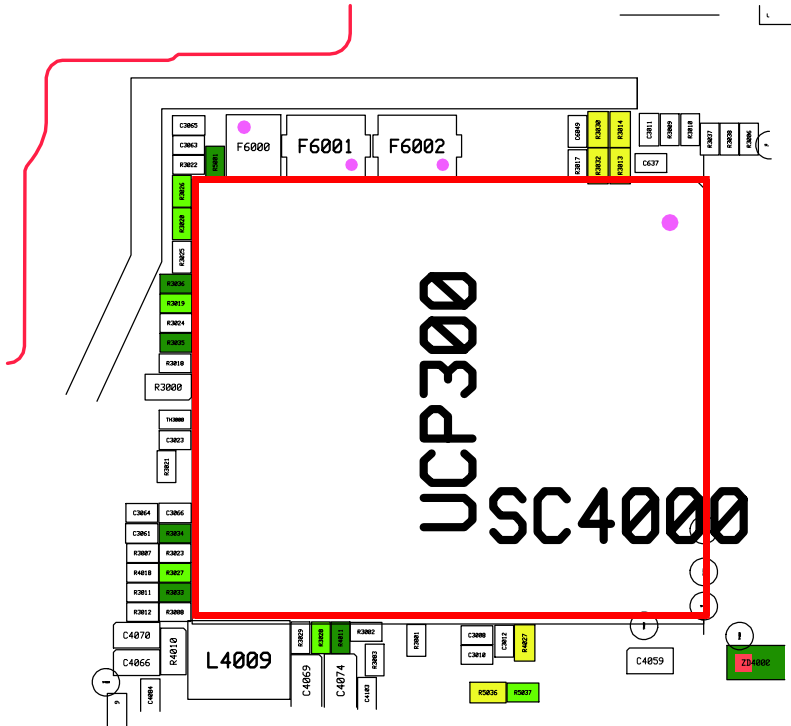




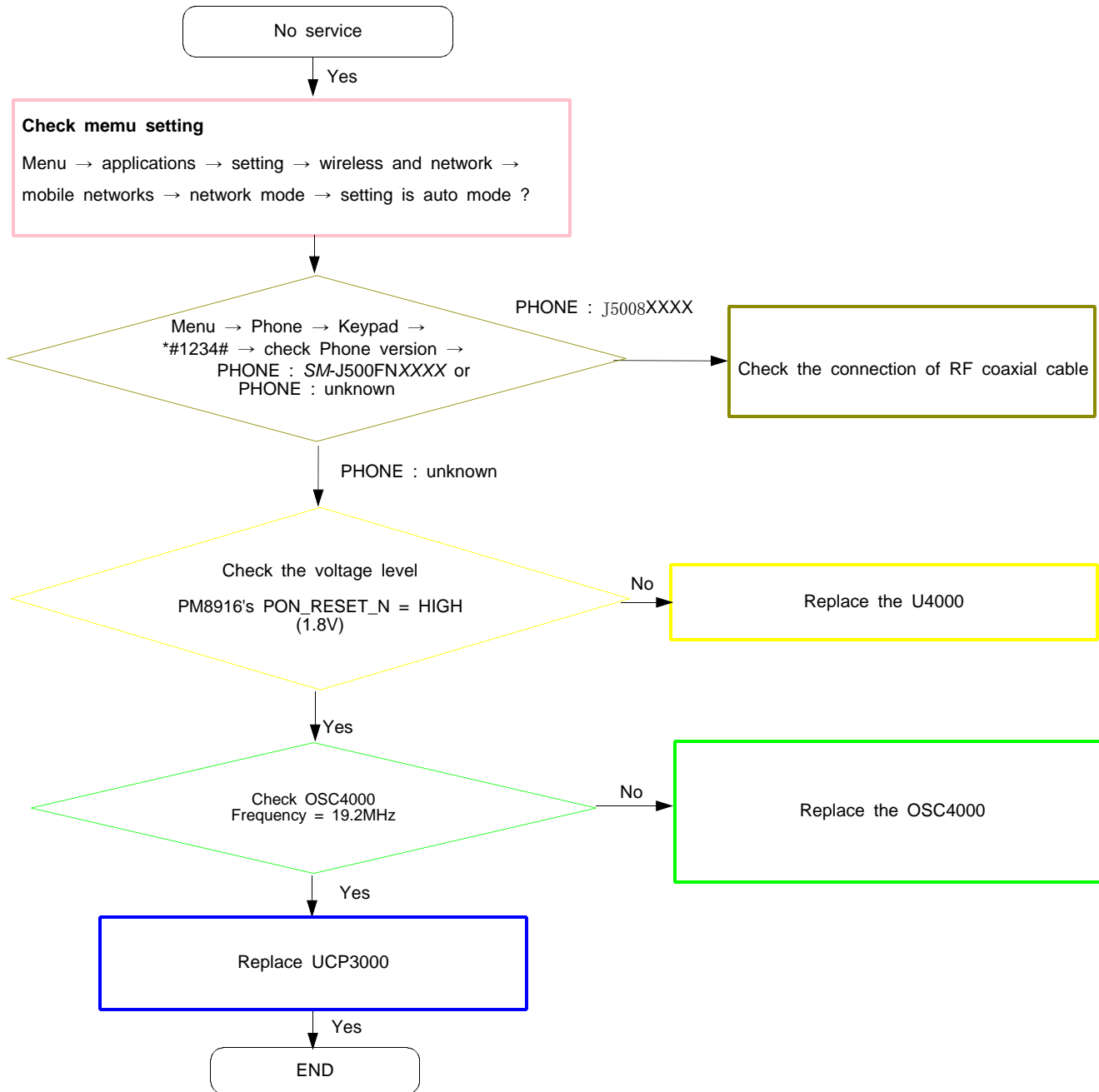


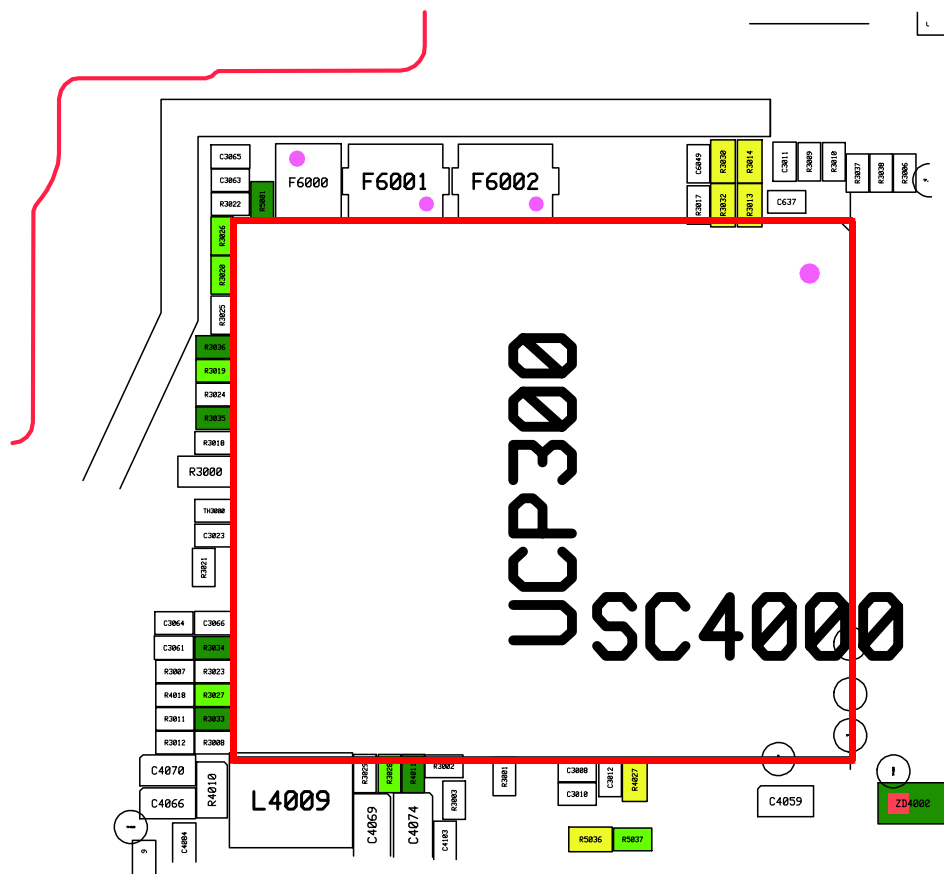
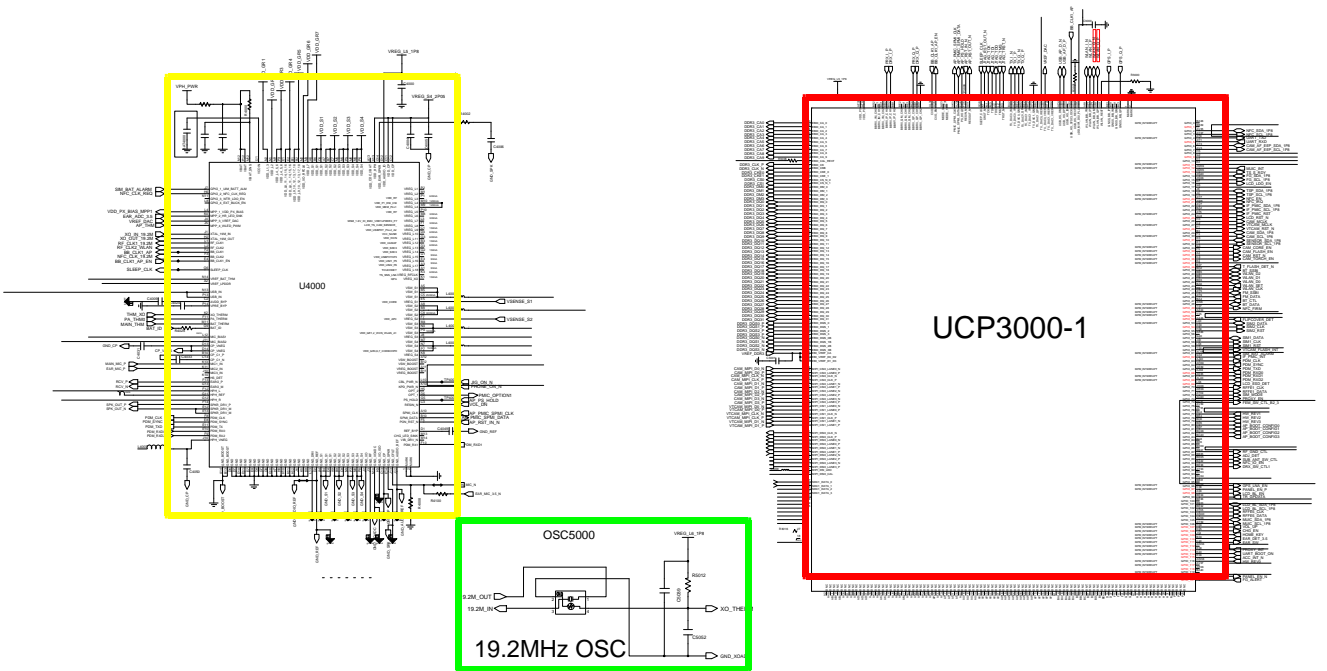
## 8-4-2. Initial



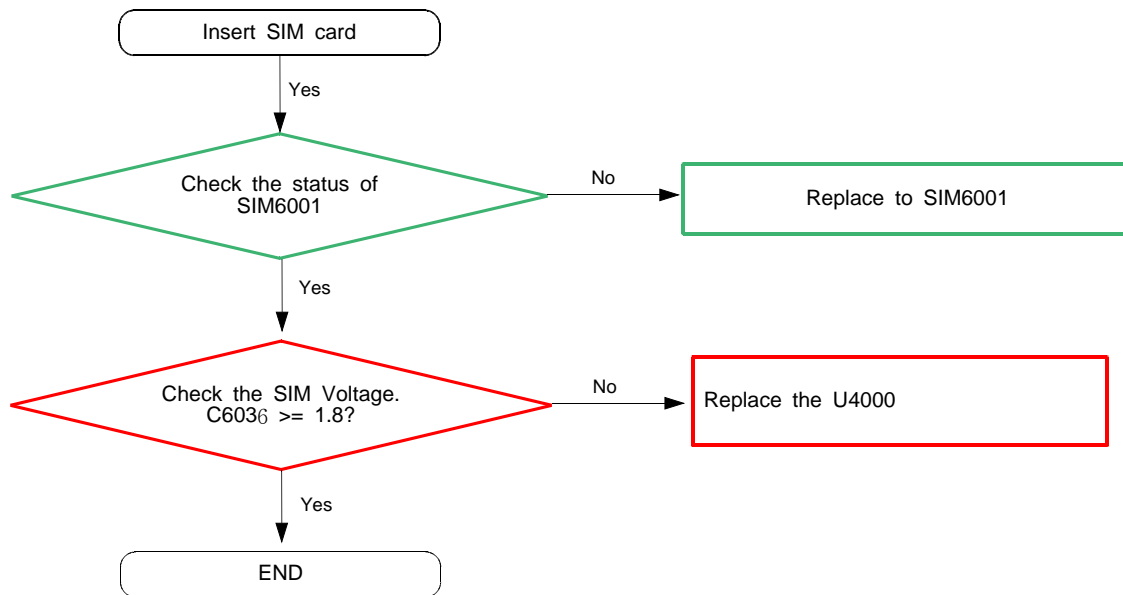


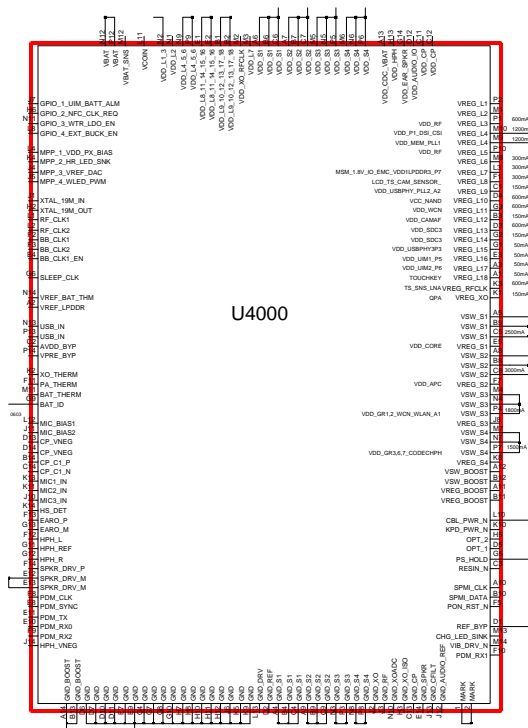
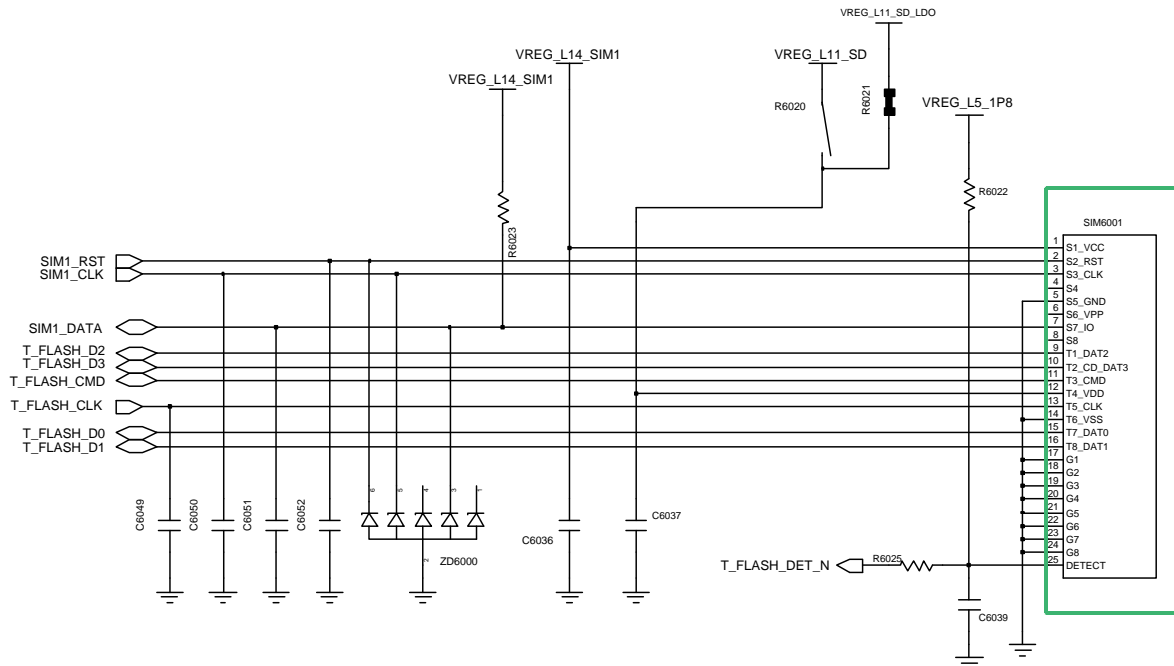
### 8-4-3. No Service



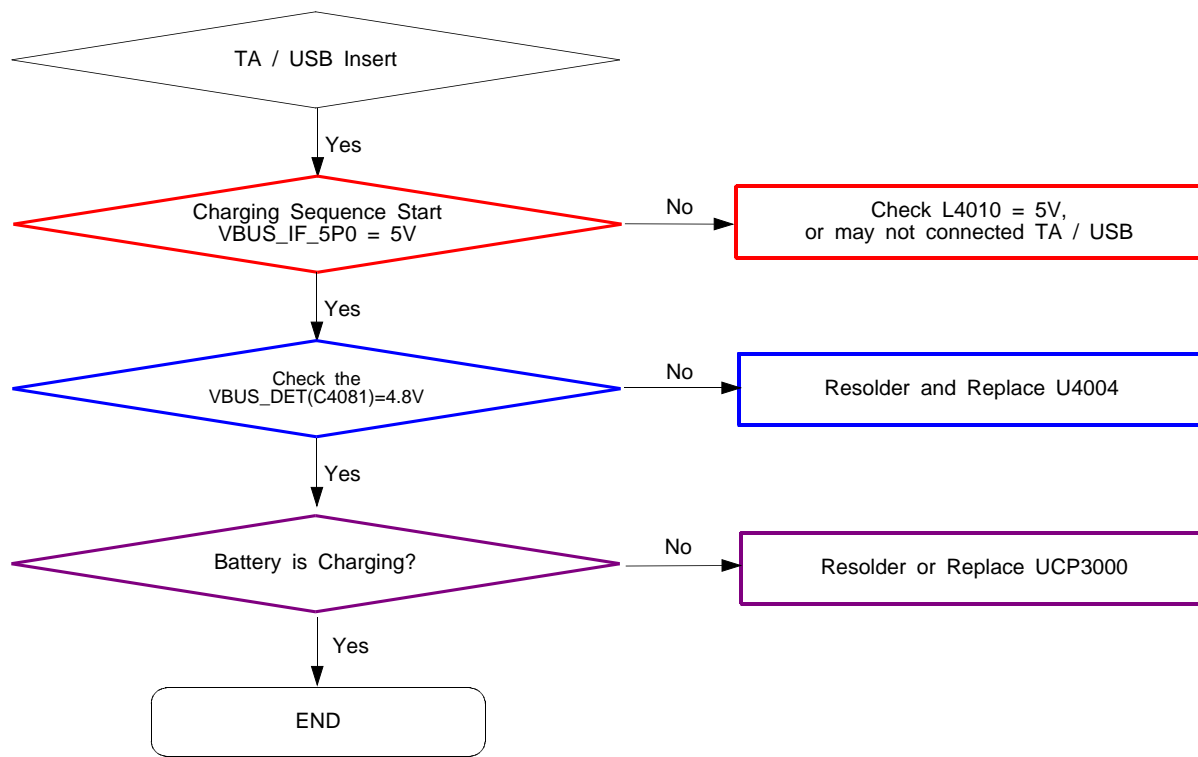


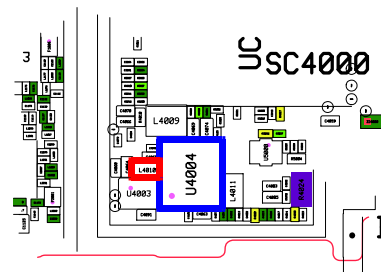
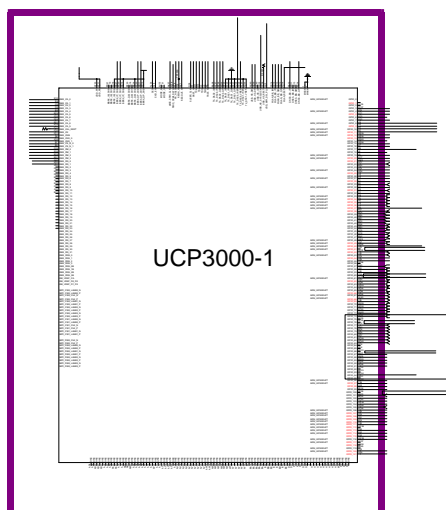
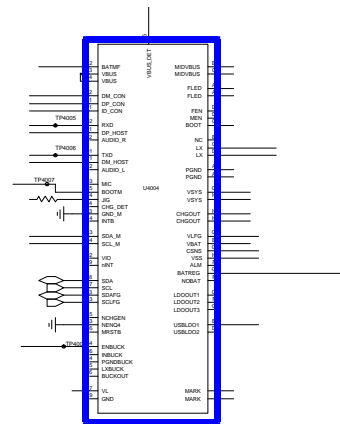
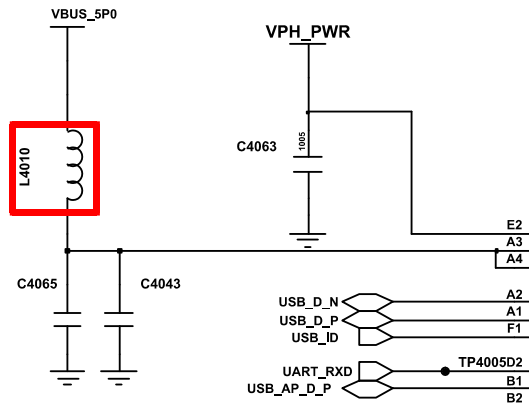
#### 8-4-4. Sim Part - Sim Card





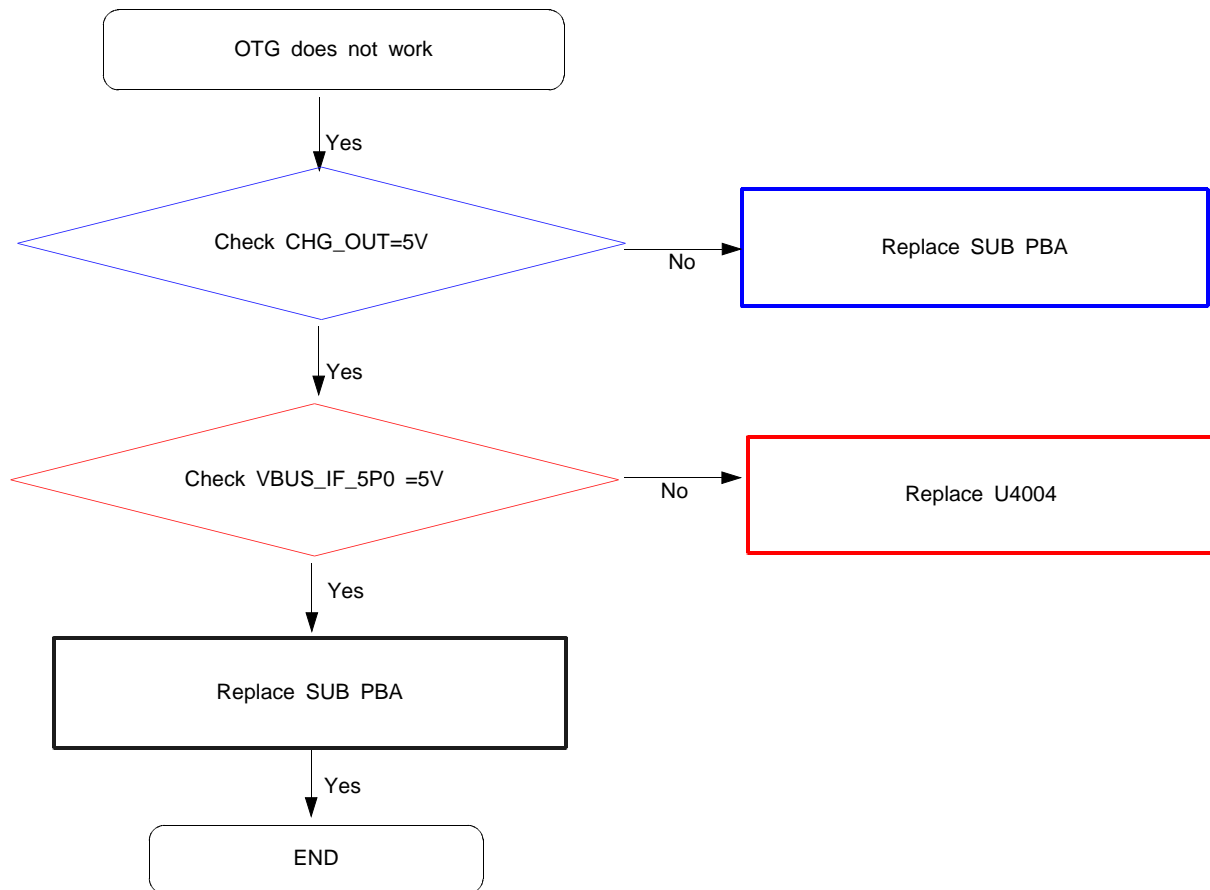
## 8-4-5. Charging Part

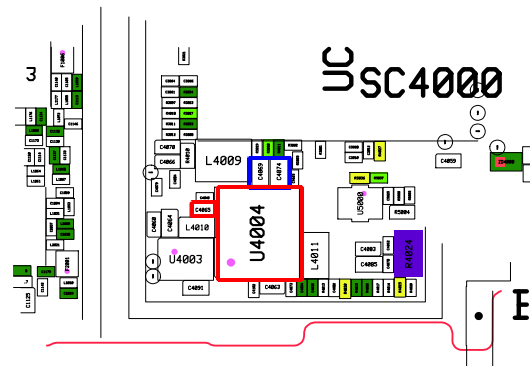
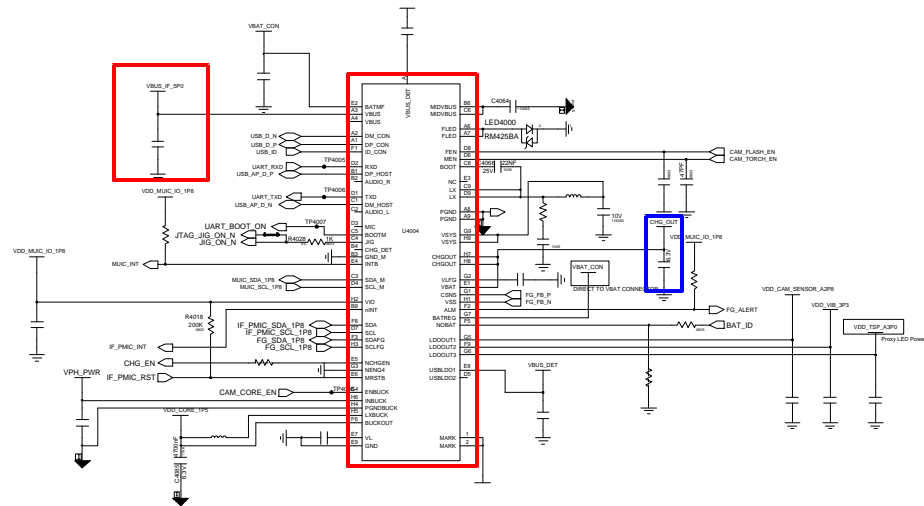




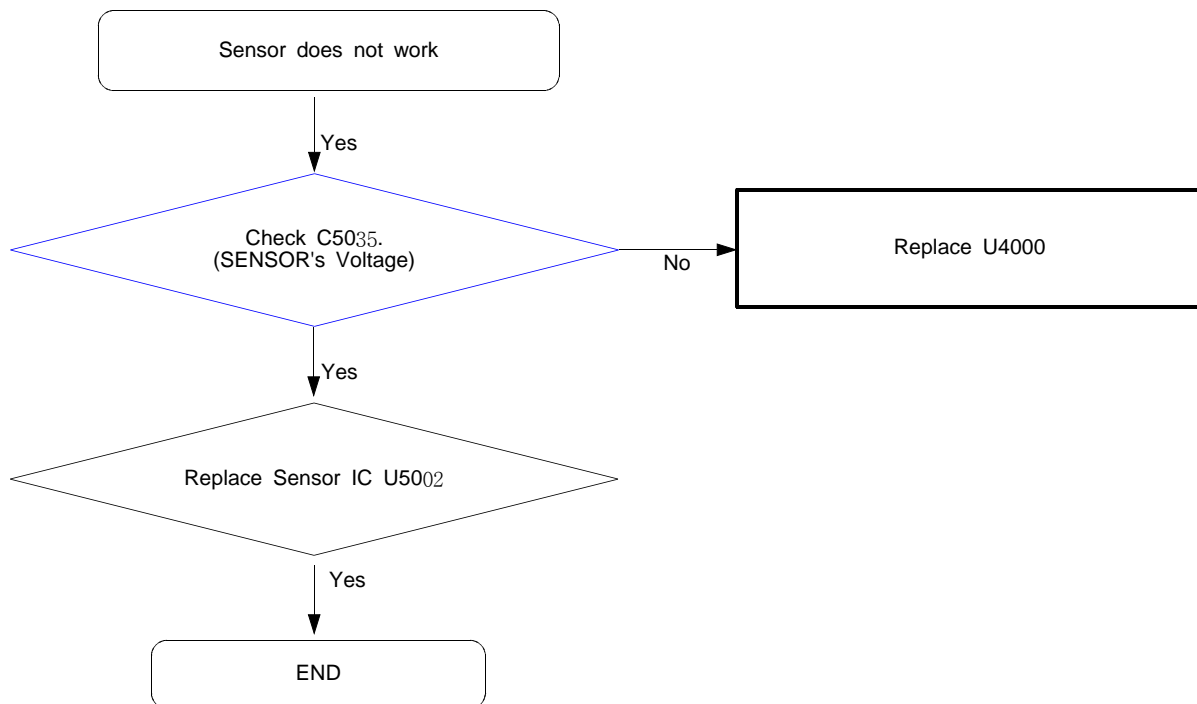


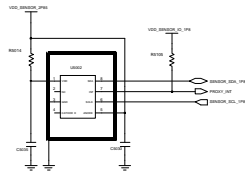
## 8-4-6. OTG



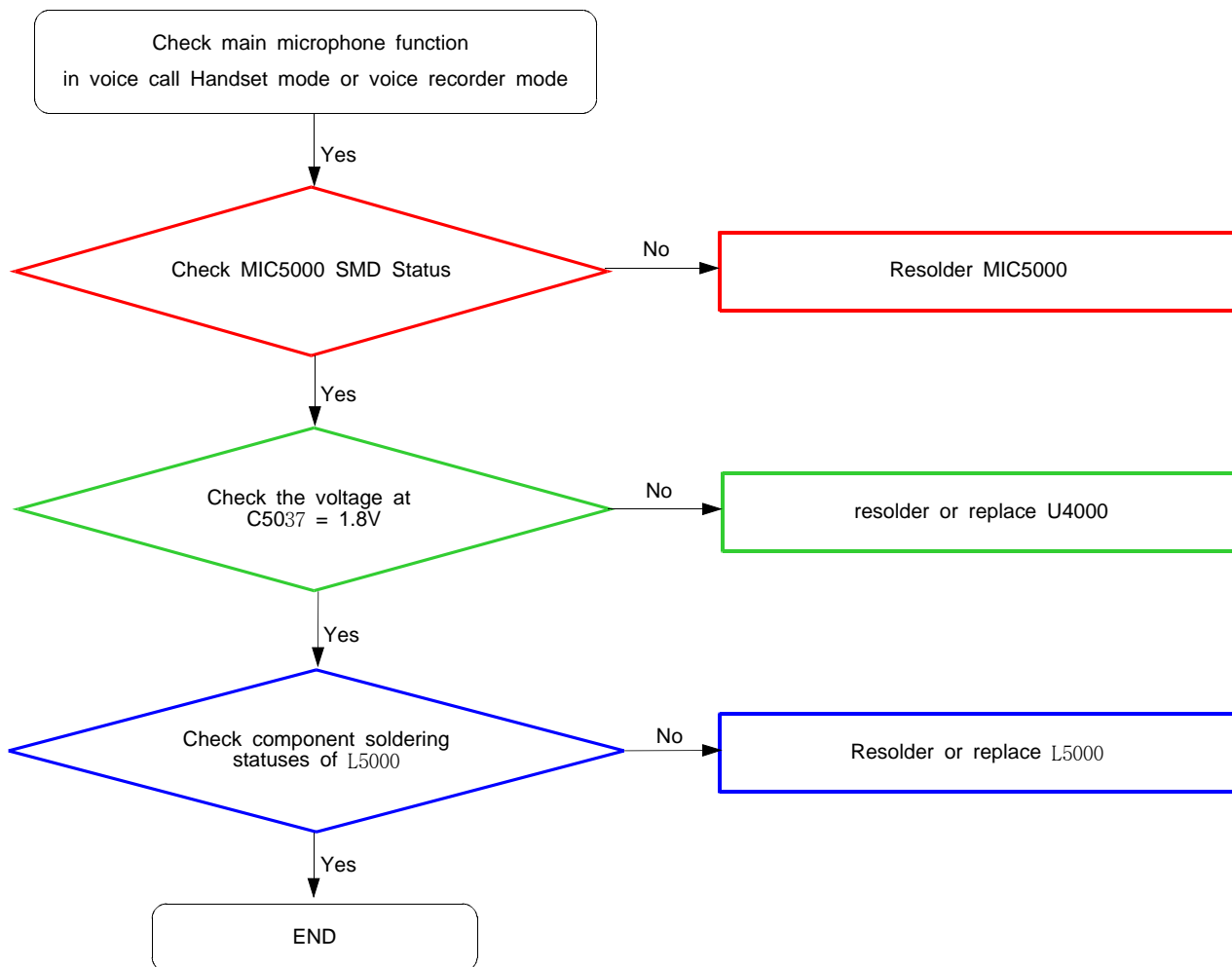


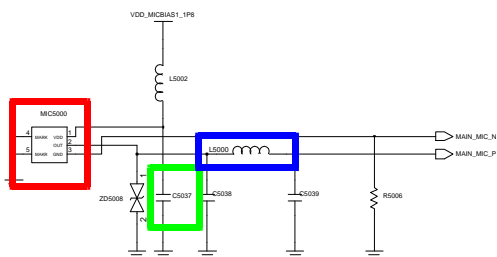
### 8-4-7. Proxy Sensor



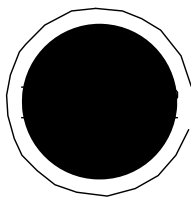
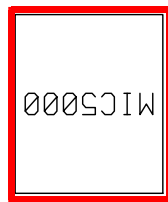
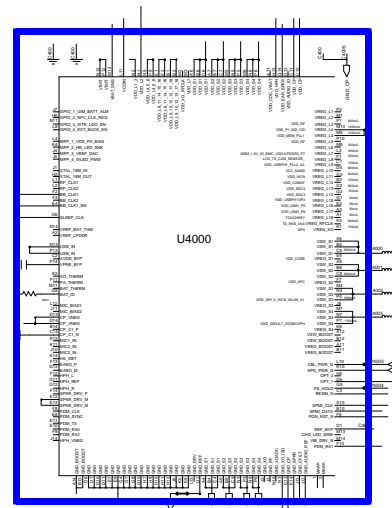


## 8-4-8 Microphone Part - Main MIC

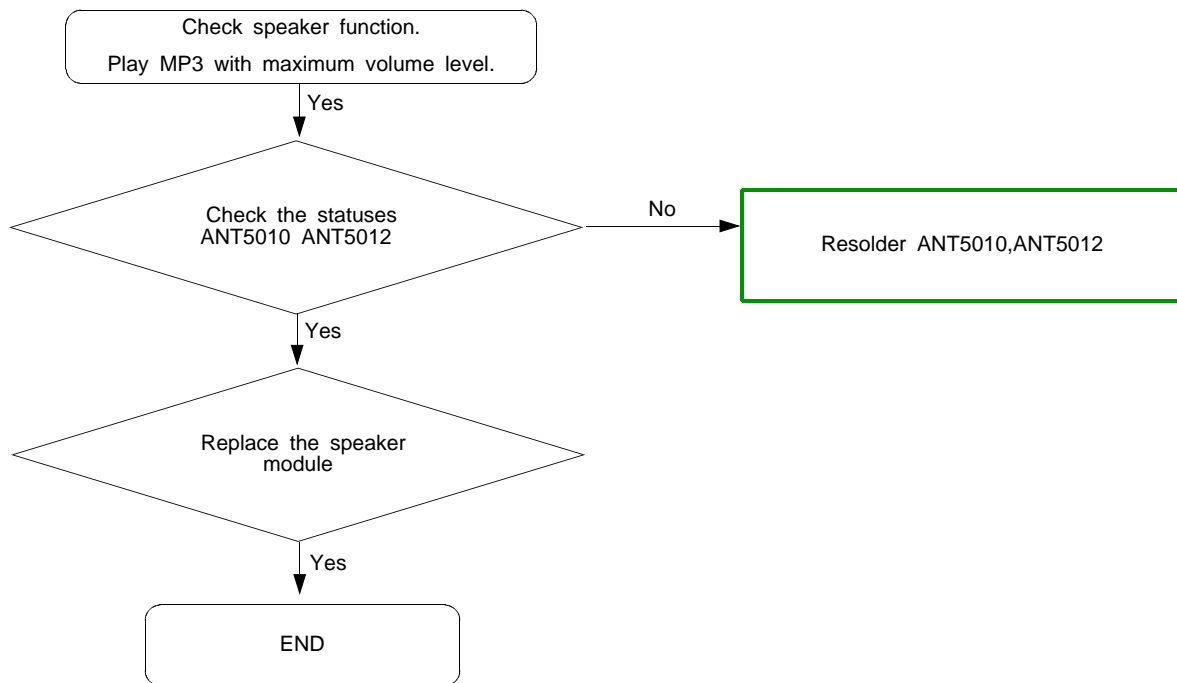


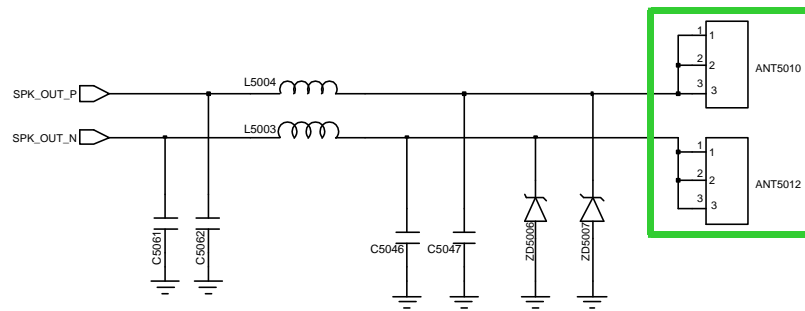


Main MIC



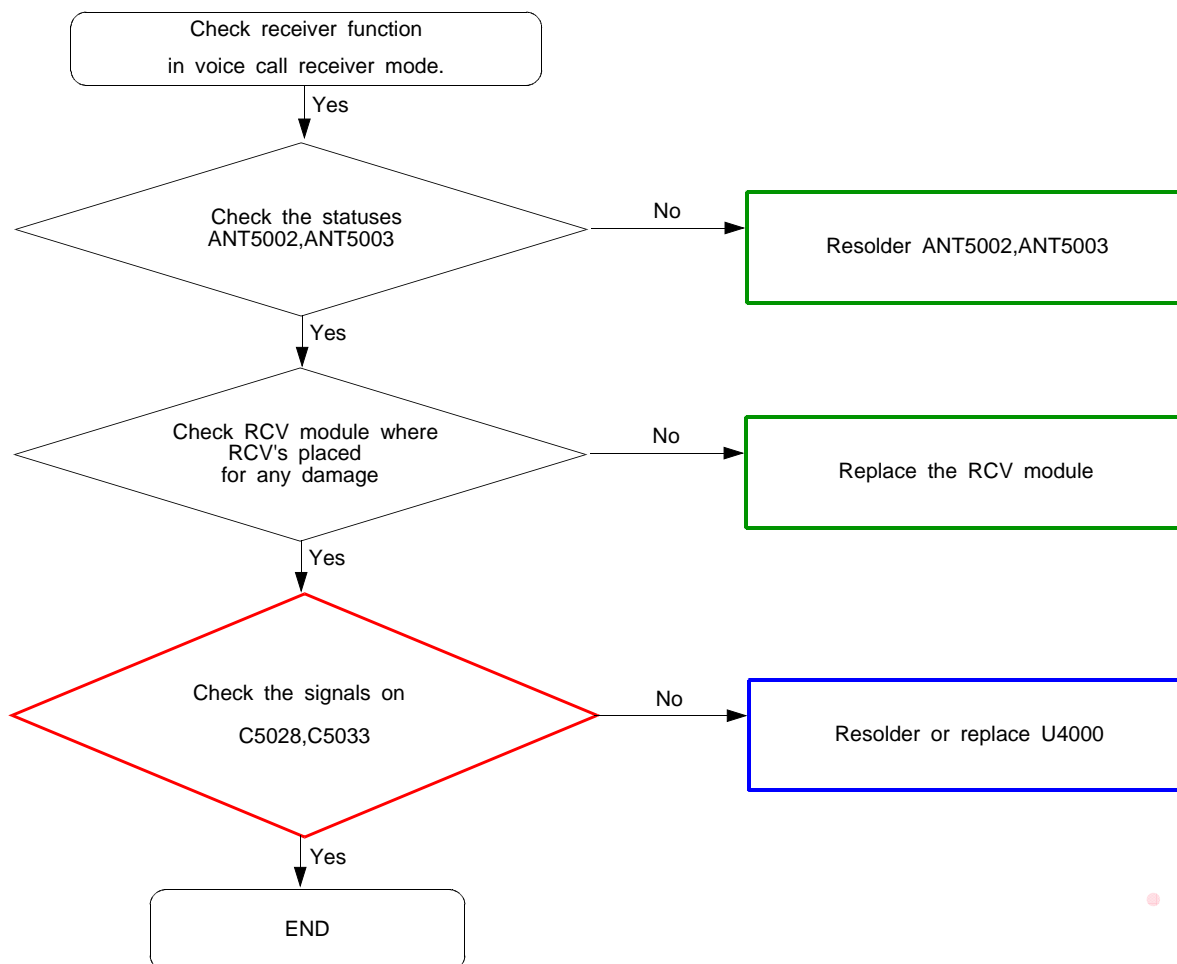
#### 8-4-9. Speaker Part

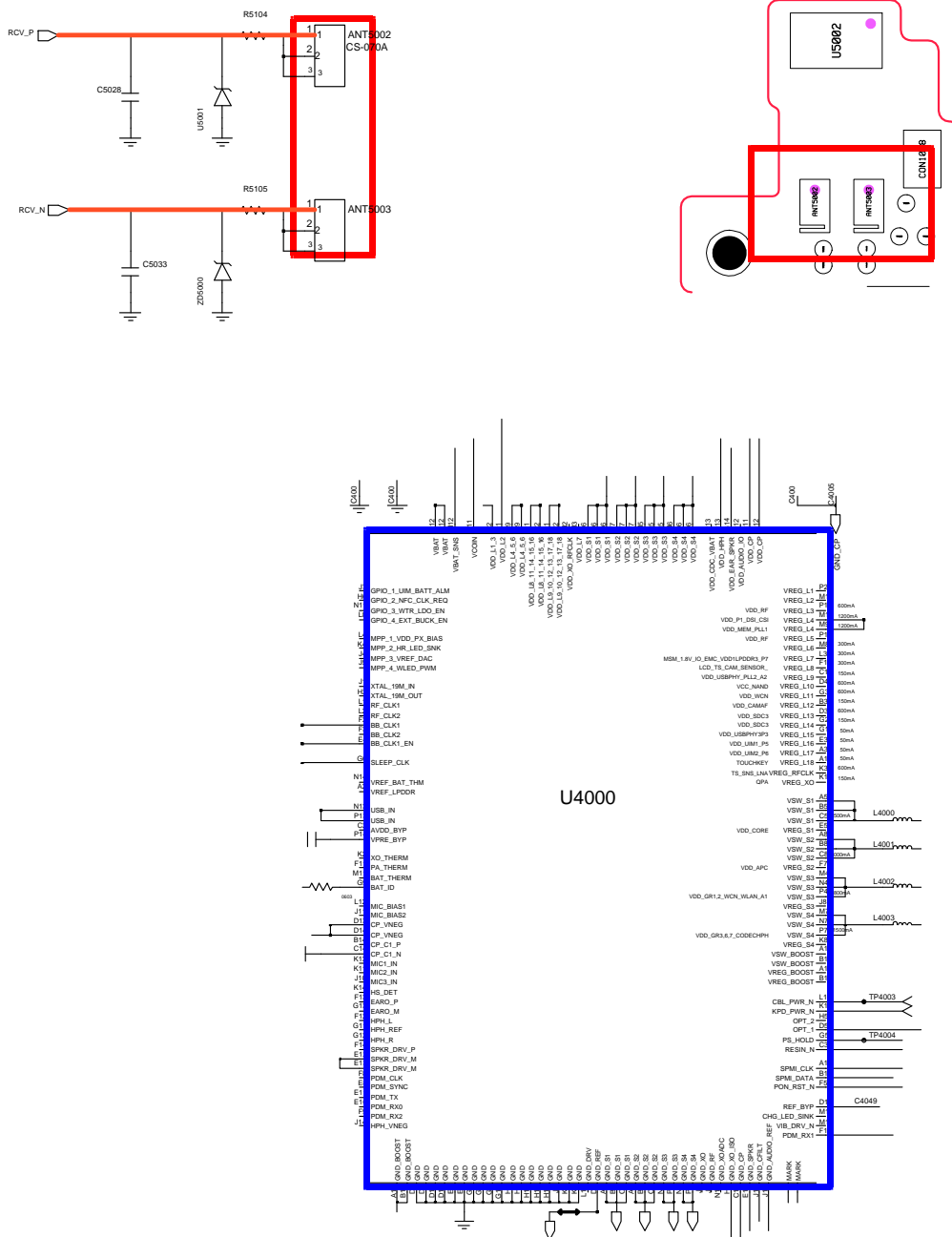




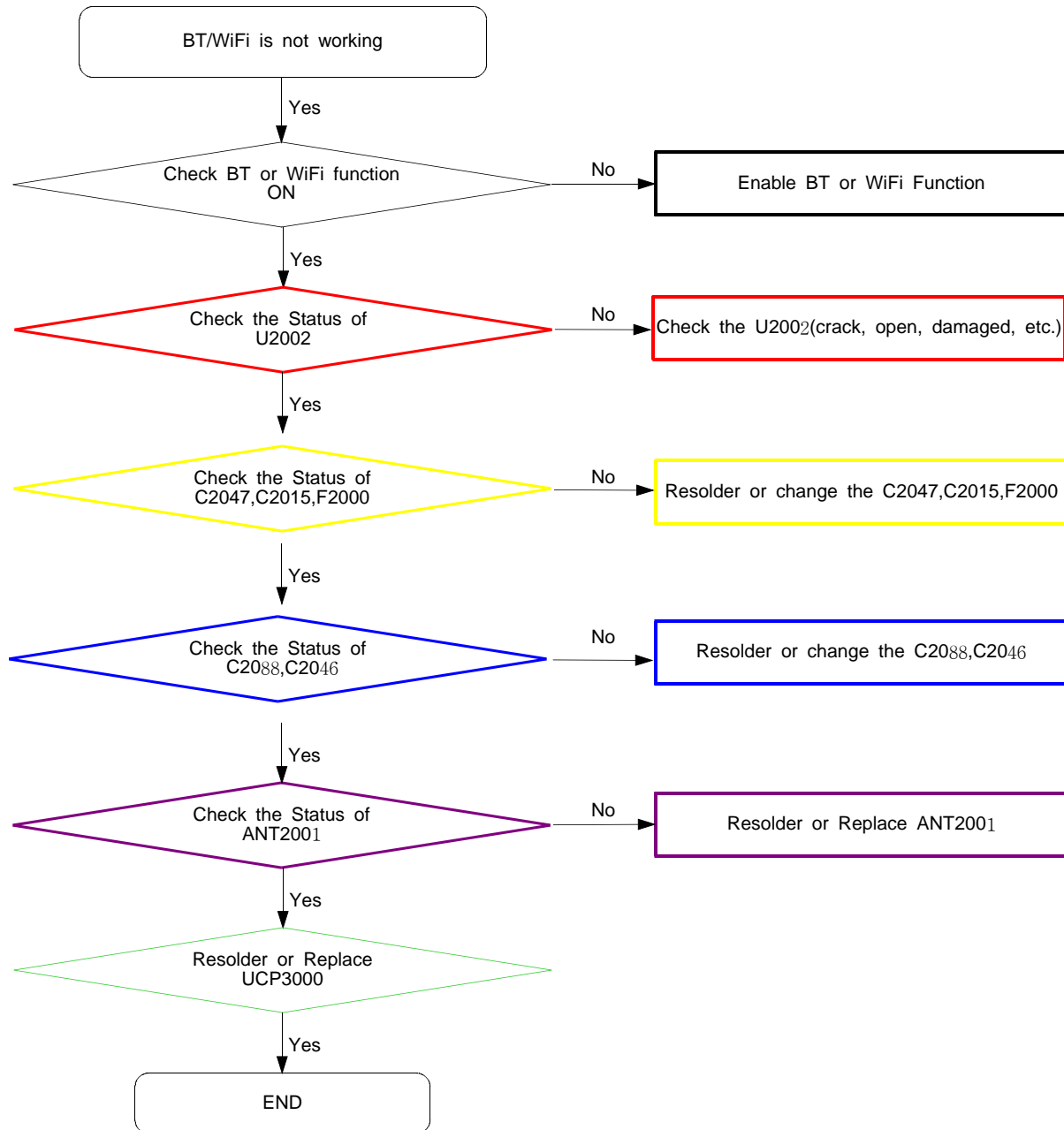


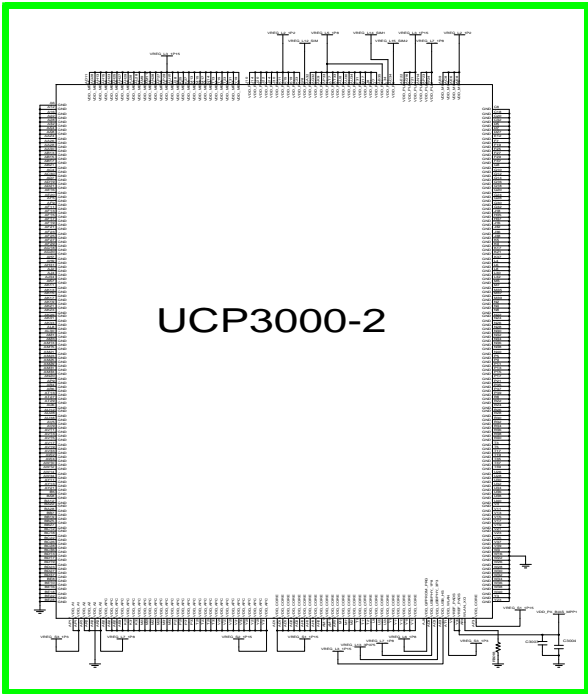
## 8-4-10. Receiver Part



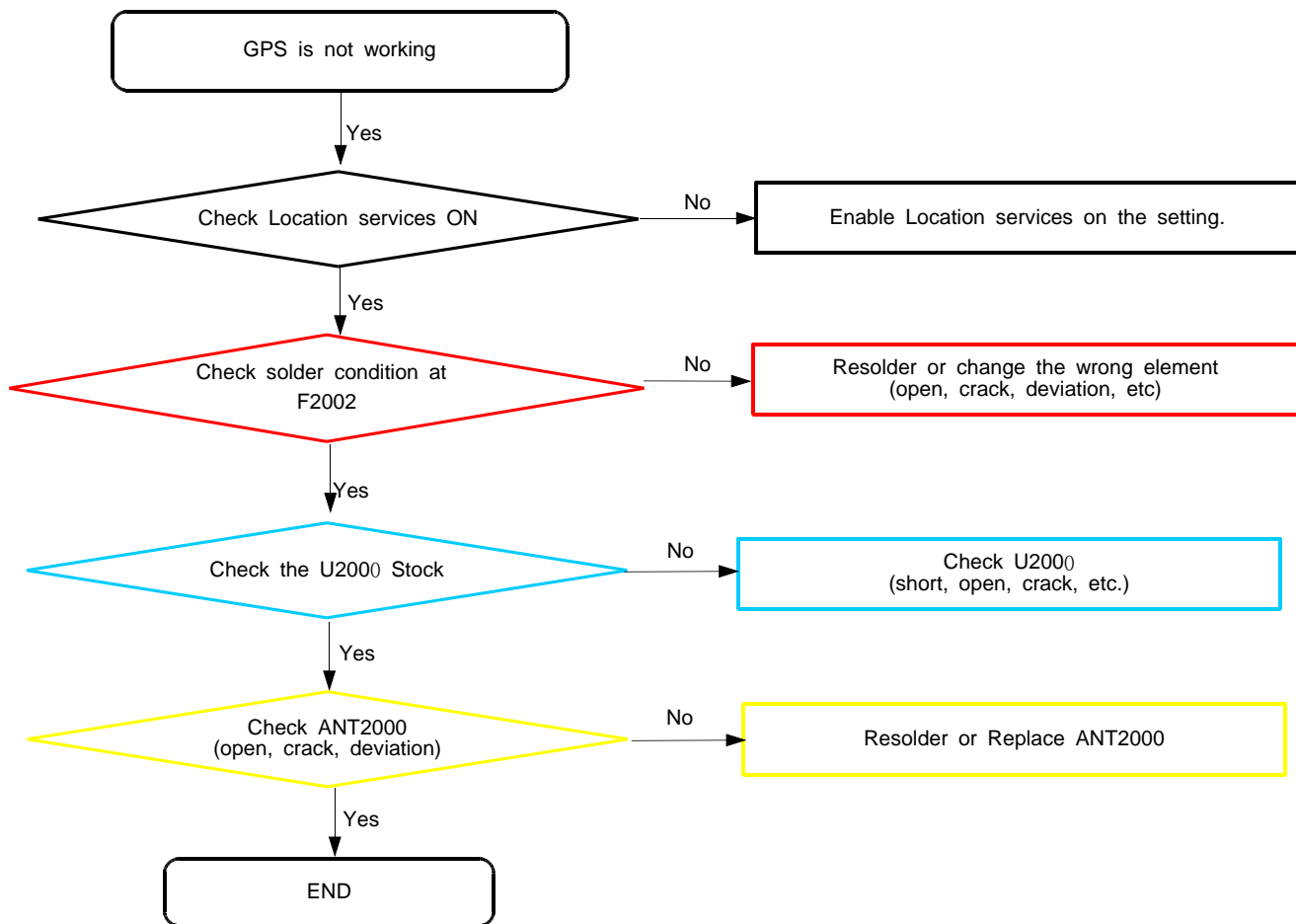


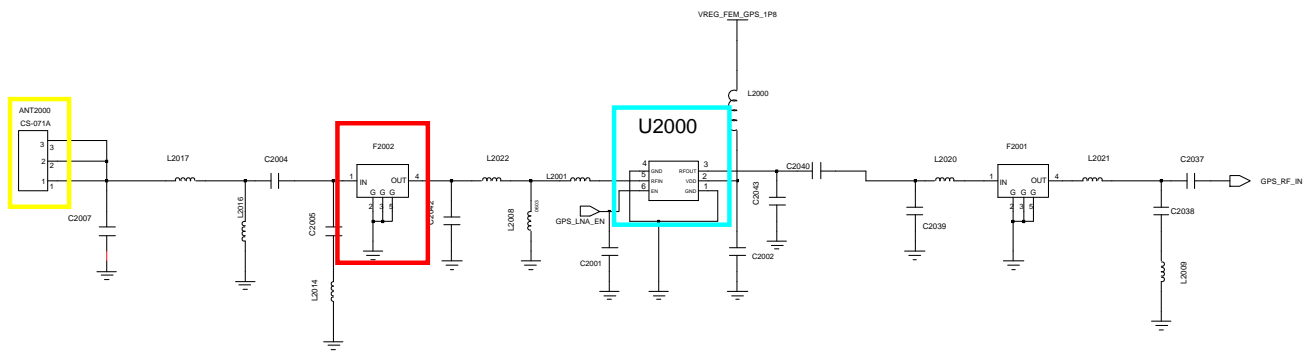
## 8-4-11. BT/WIFI



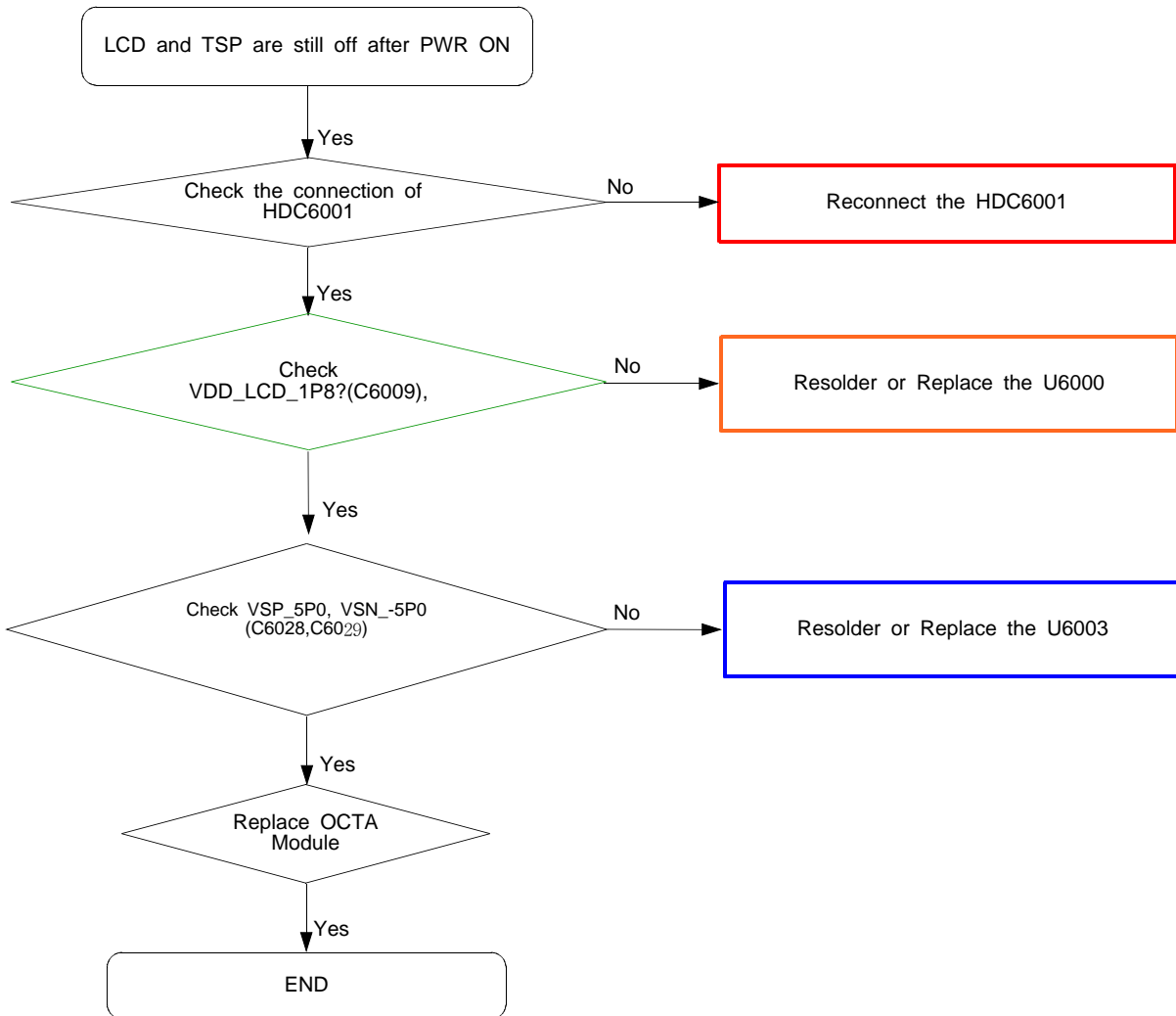


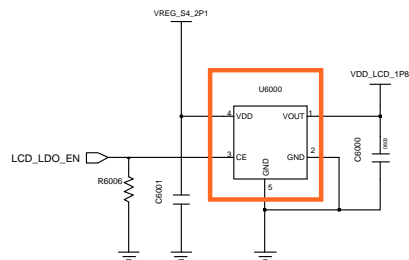
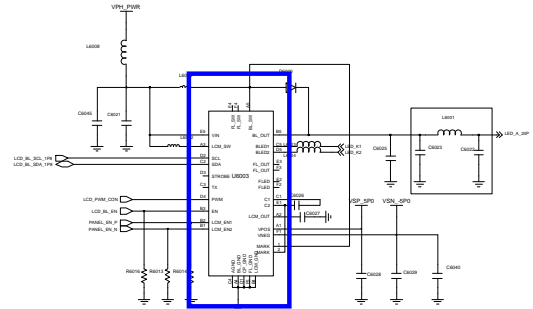
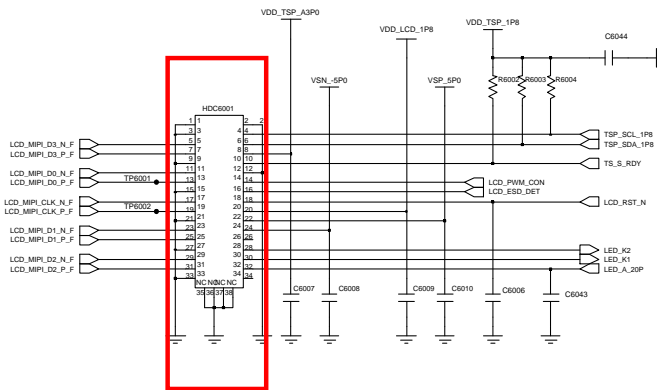
## 8-4-12. GPS





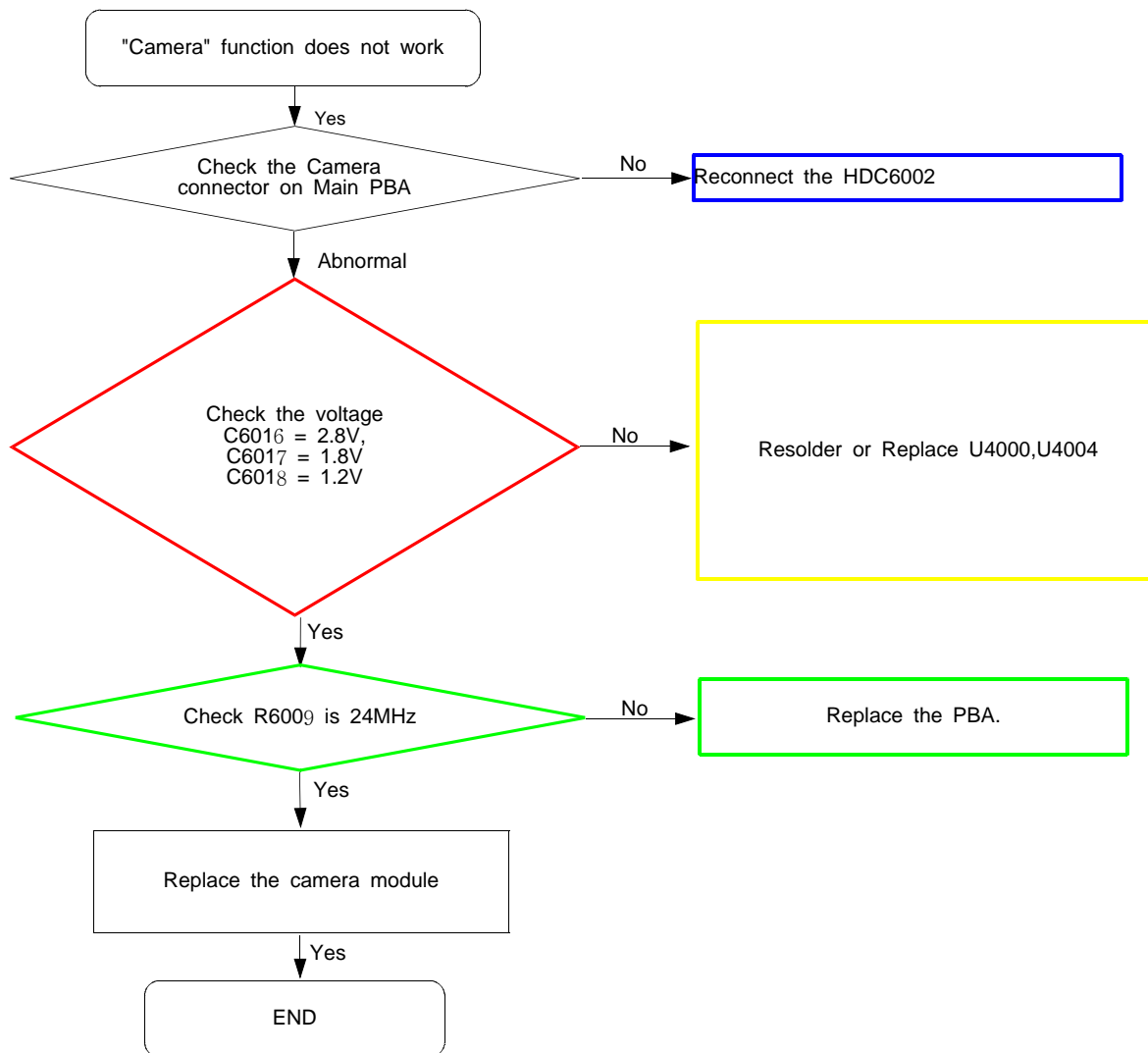
### 8-4-13. LCD,TSP

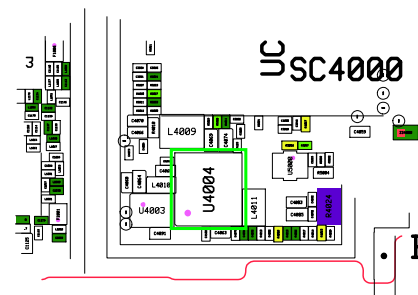
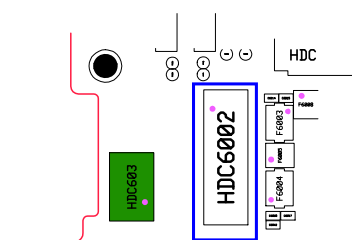
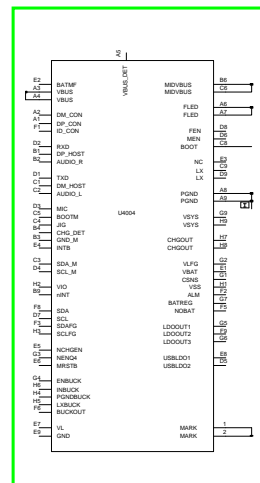
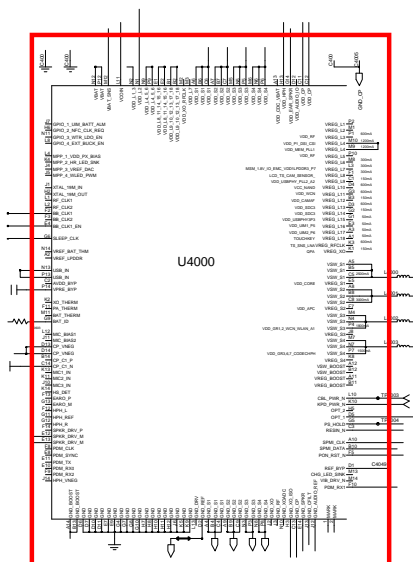
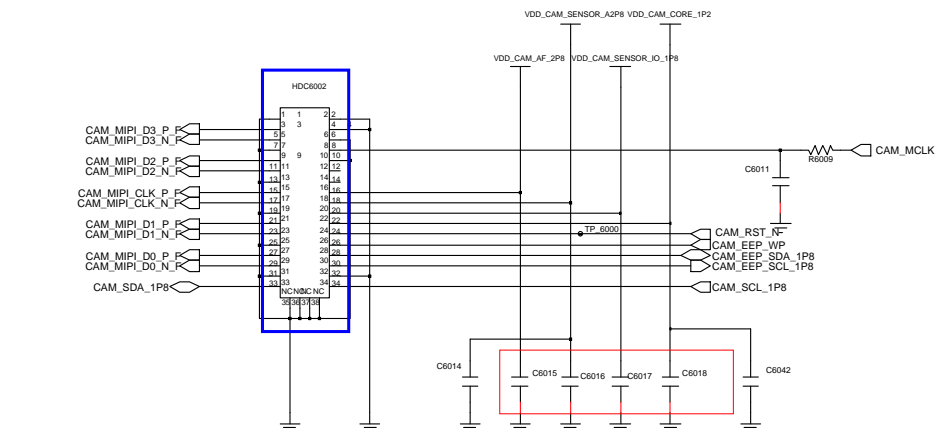




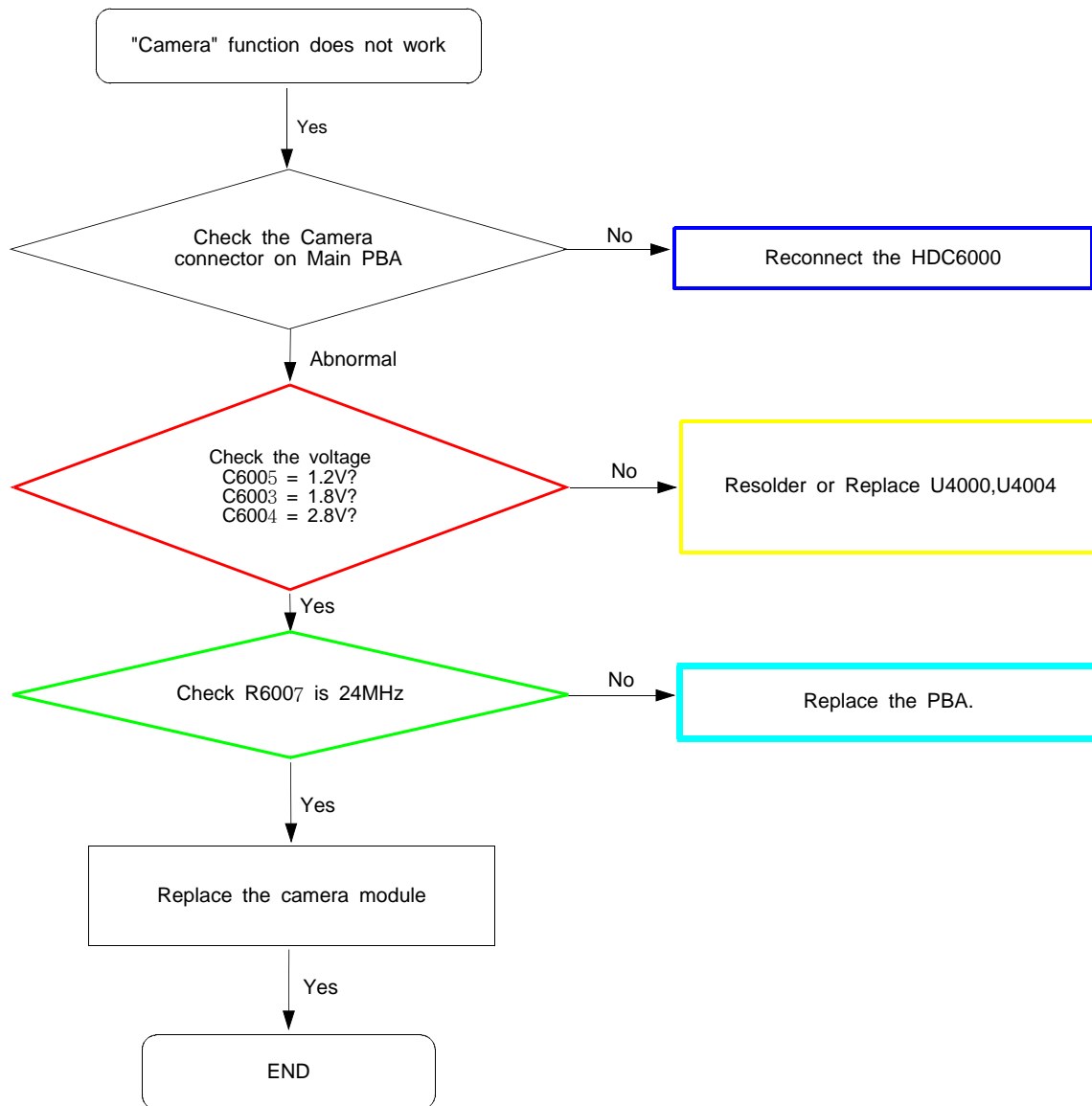


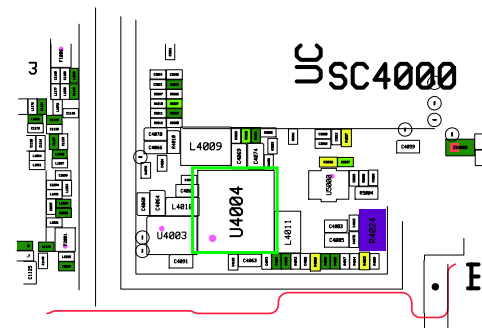
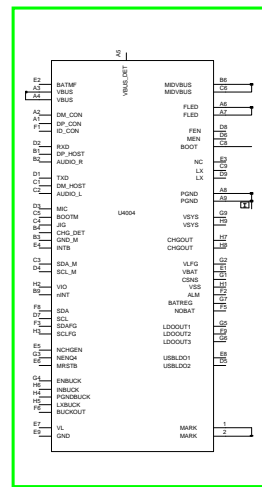
# 8-4-15. 13M CAM



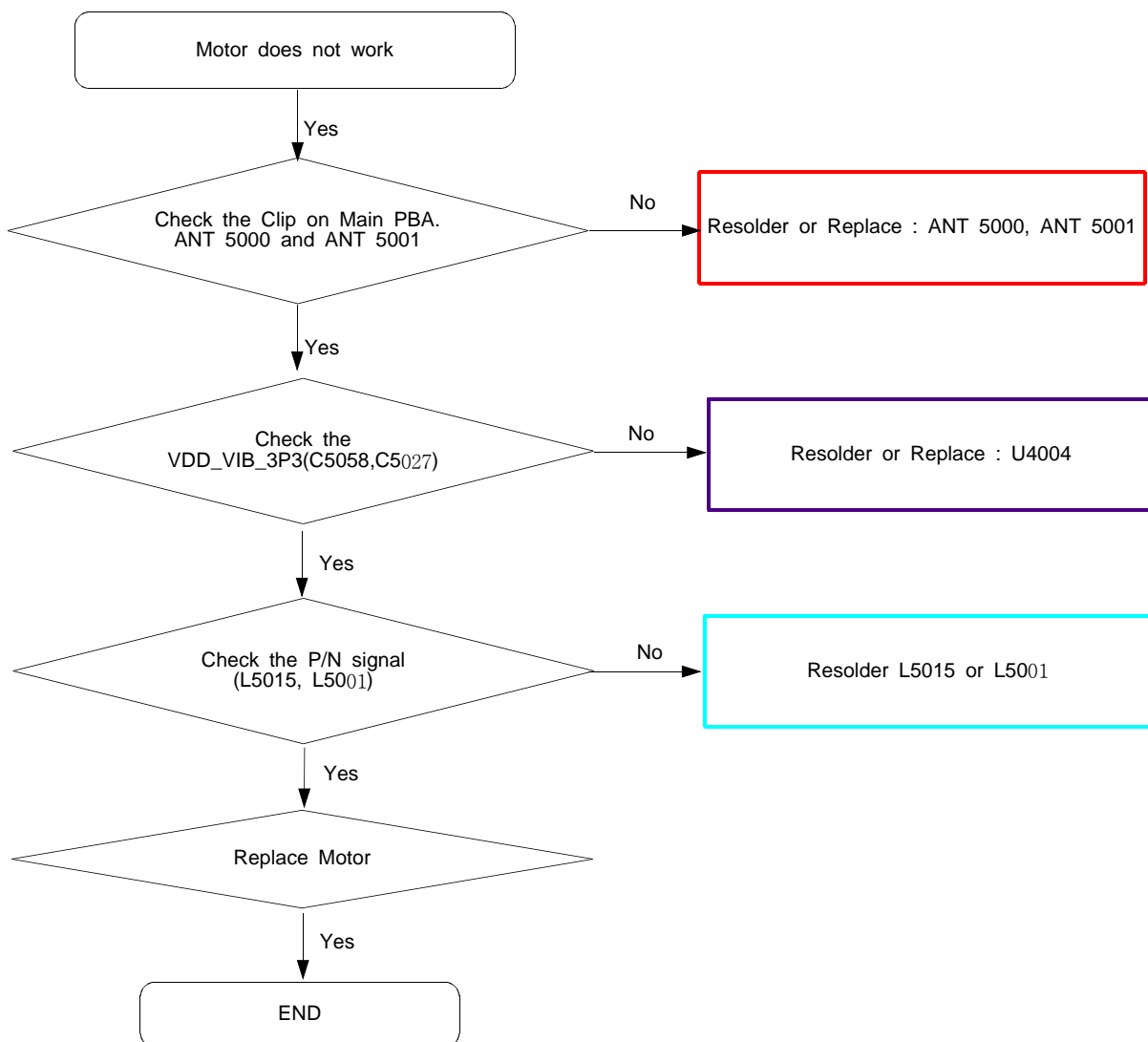


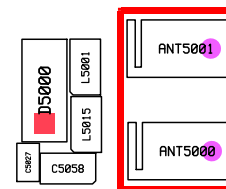
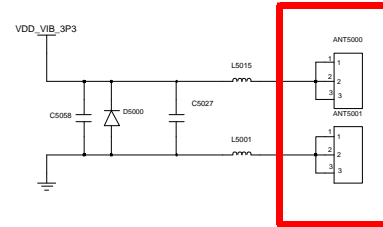
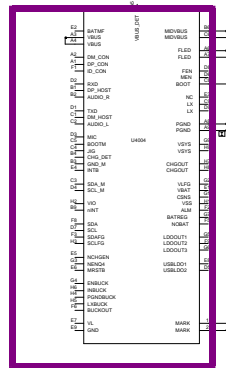
## 8-4-16. VT CAM



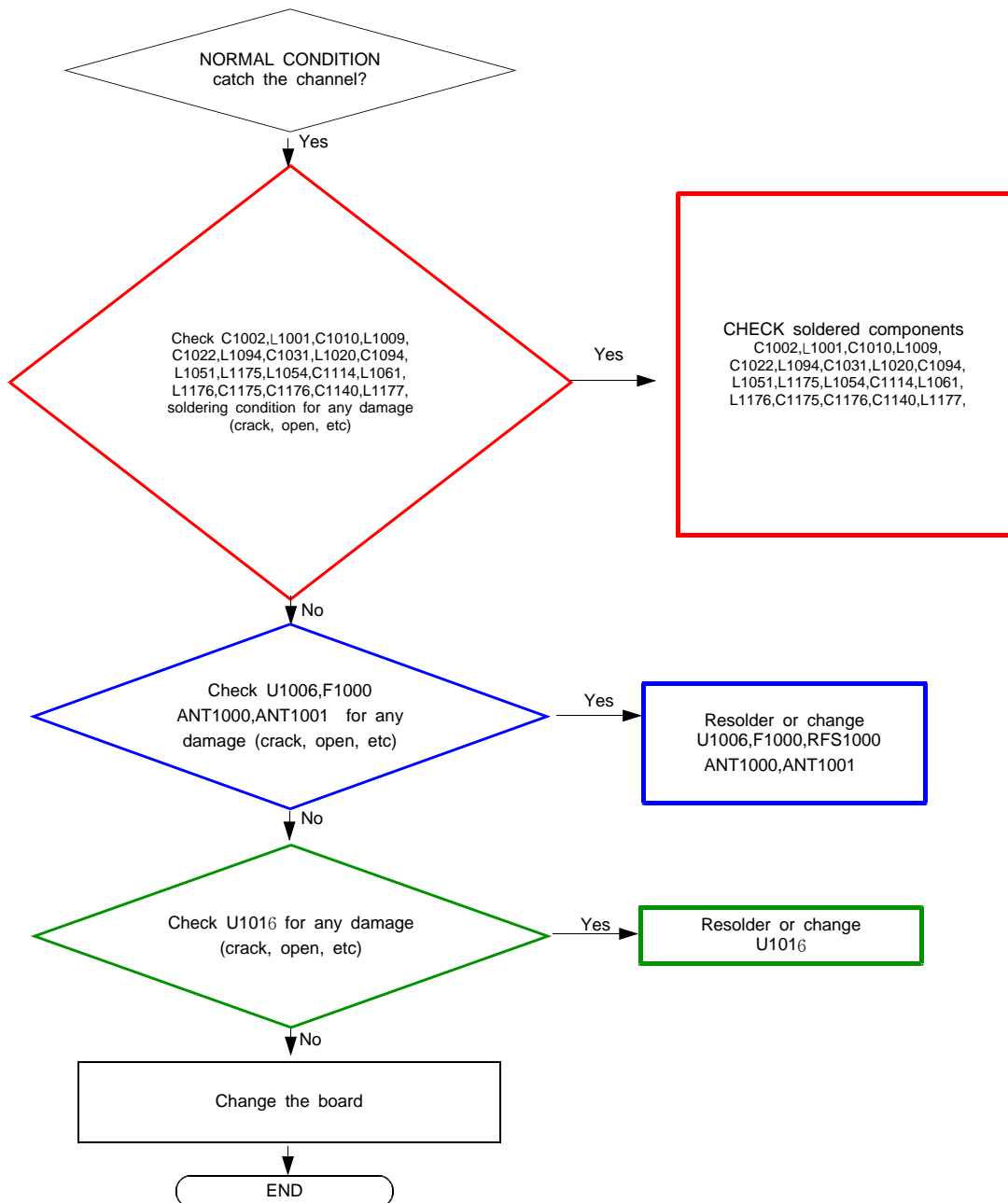


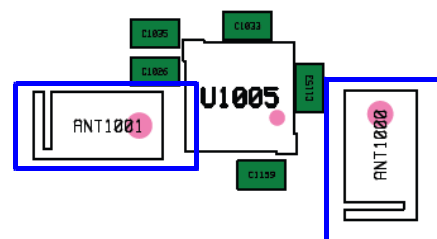
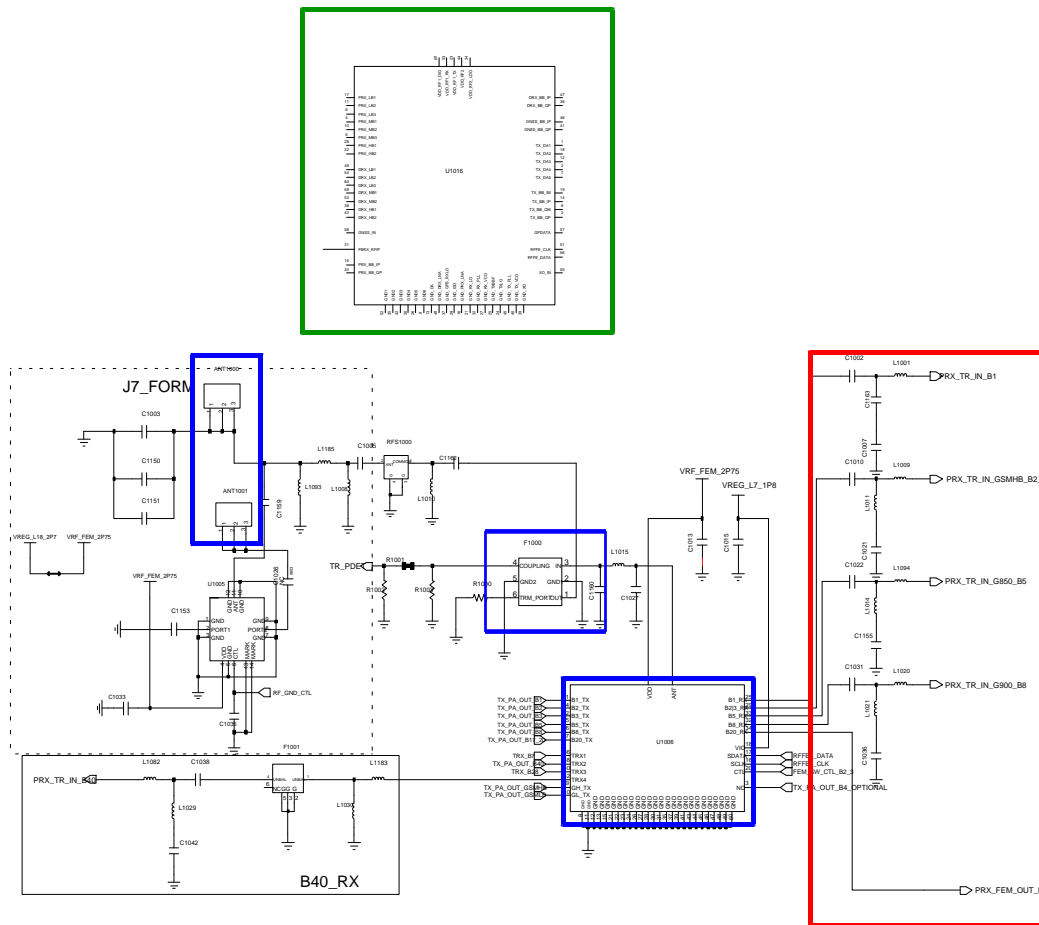
## 8-4-18. Motor





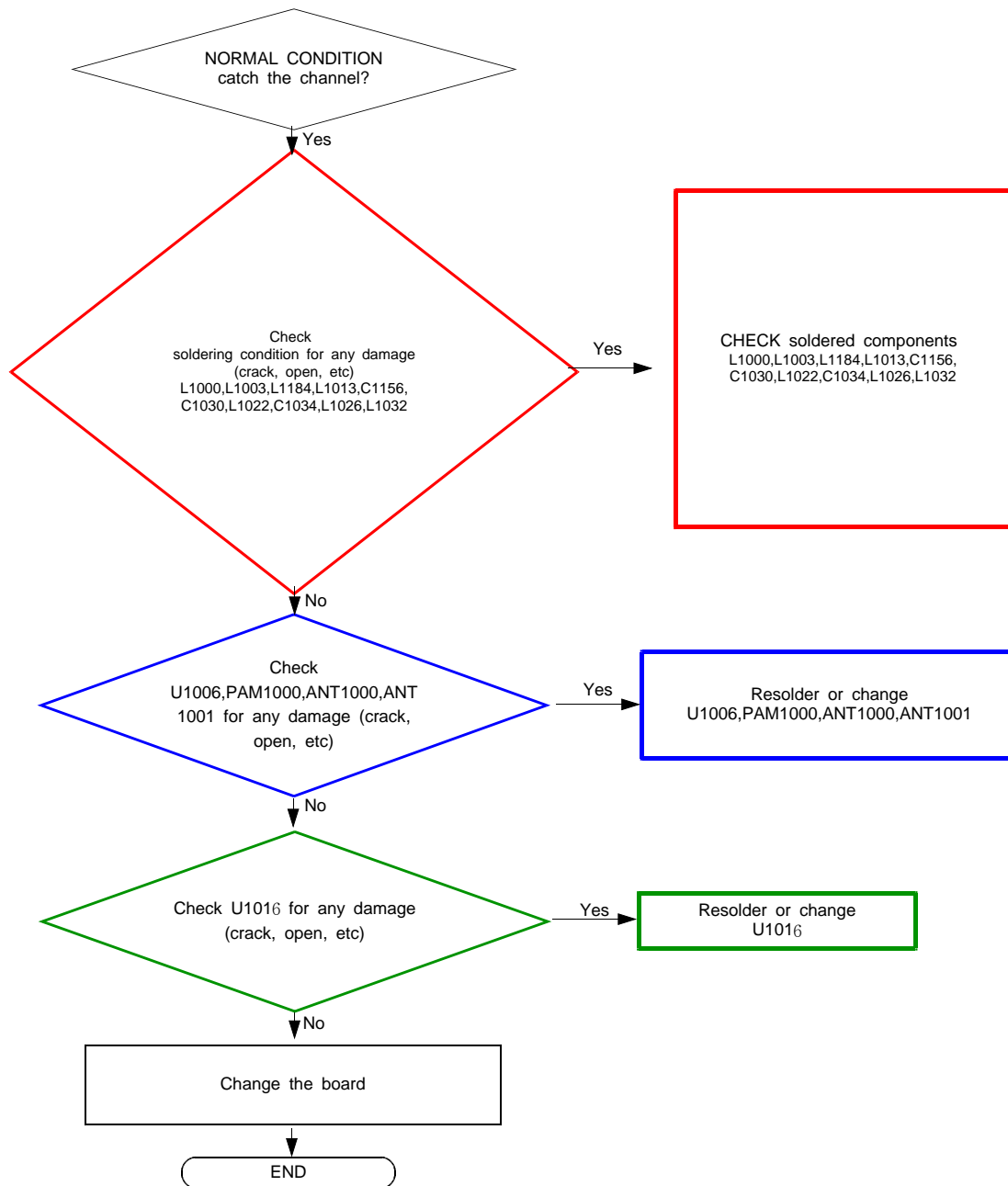
8-4-19. GSM 850,900,1800,1900 / WCDMA 1,2,5,8 / LTE 1,3,5,7,8,20,40 RX

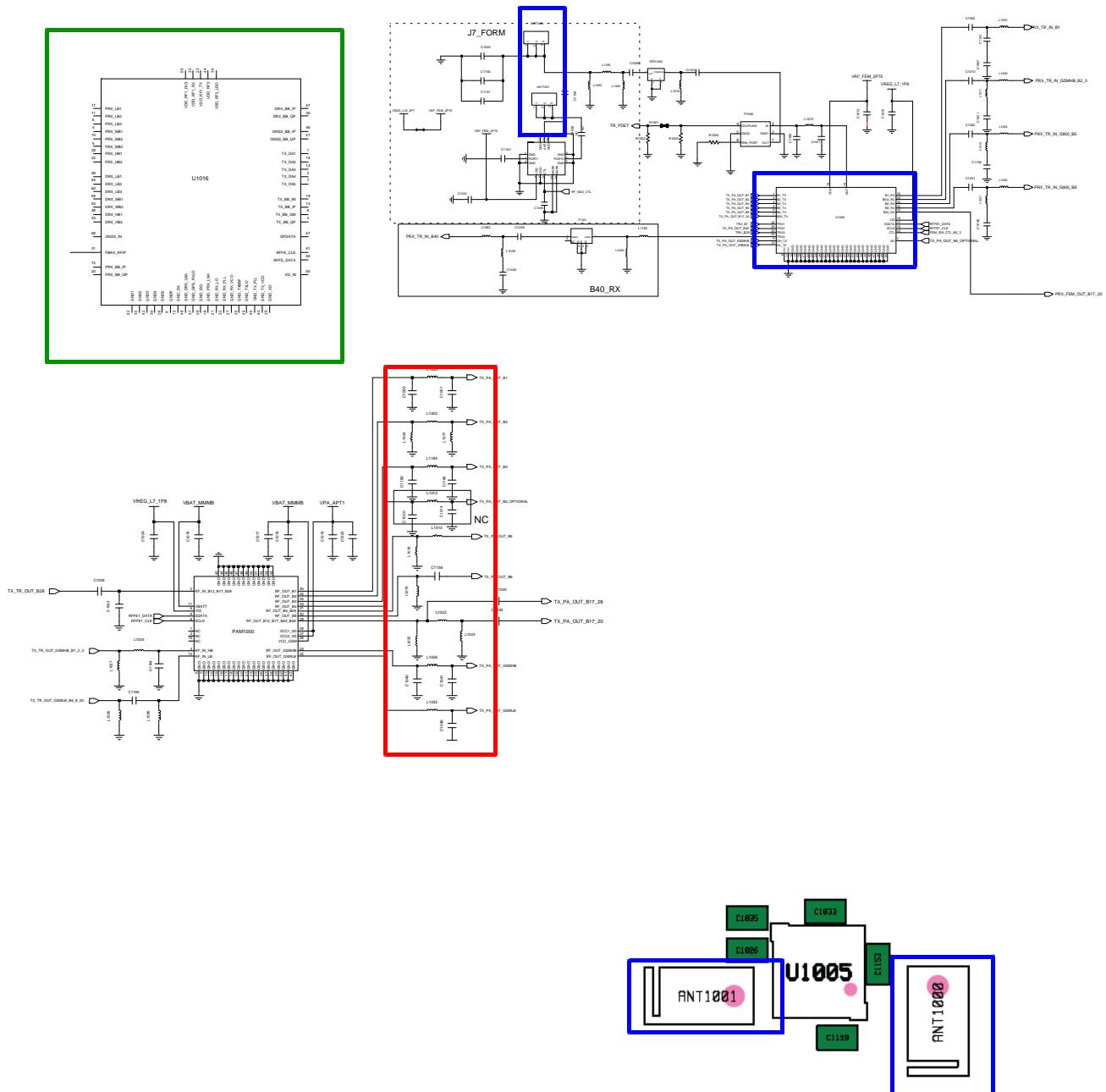






8-4-20. GSM 850,900,1800,1900 / WCDMA 1,2,5,8 / LTE 1,3,5,7,8,20,40 TX





## 8-5. Service Schematics

- NC point(Top view)

UCP3000(AP)

